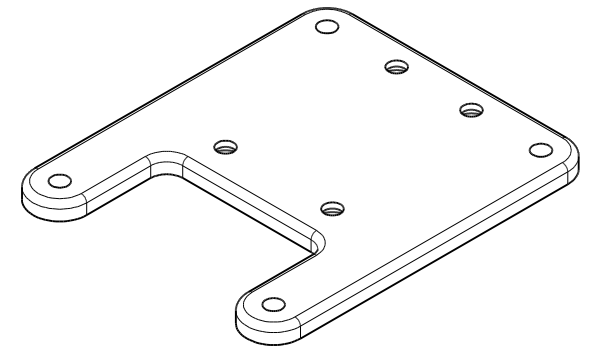
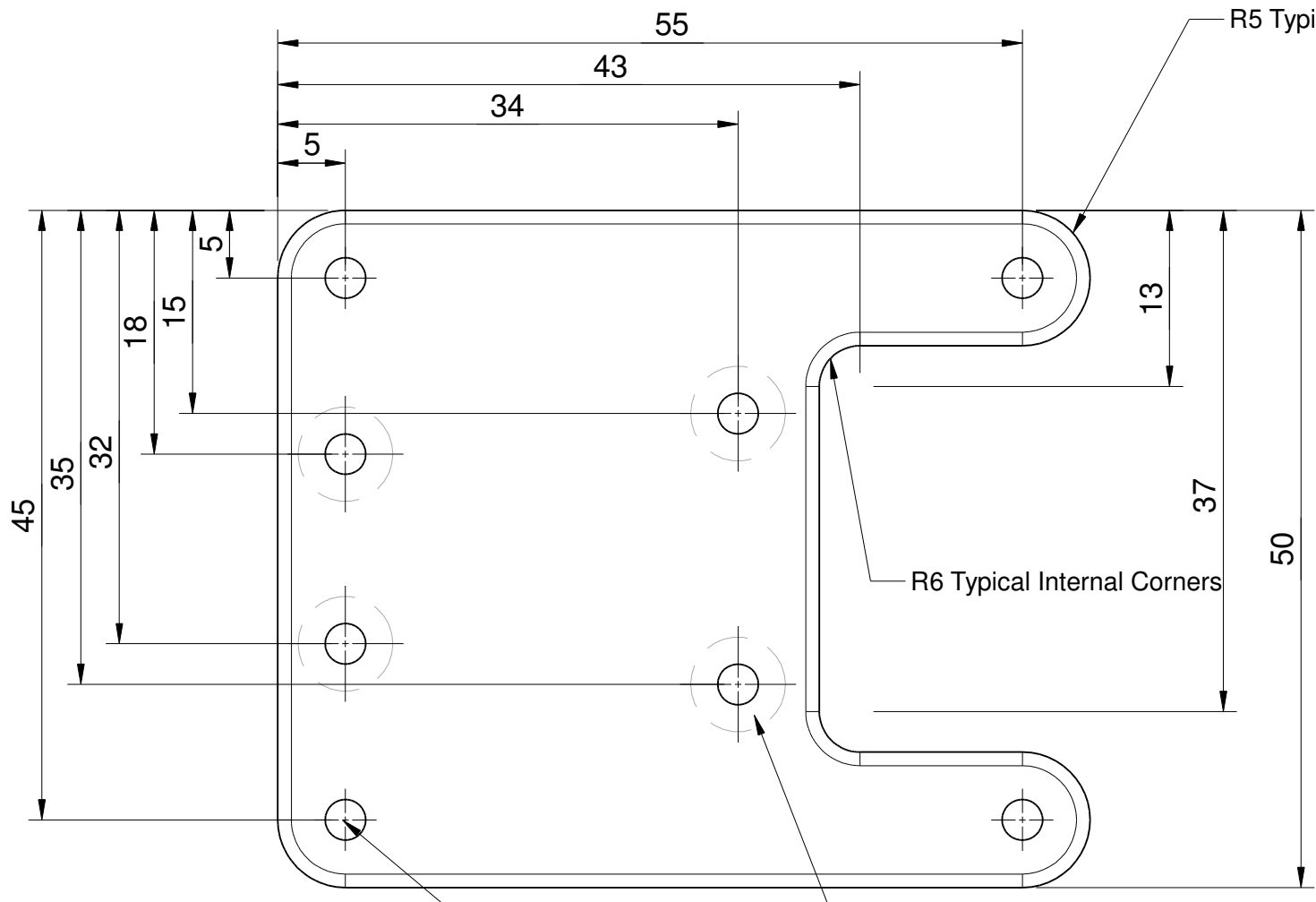


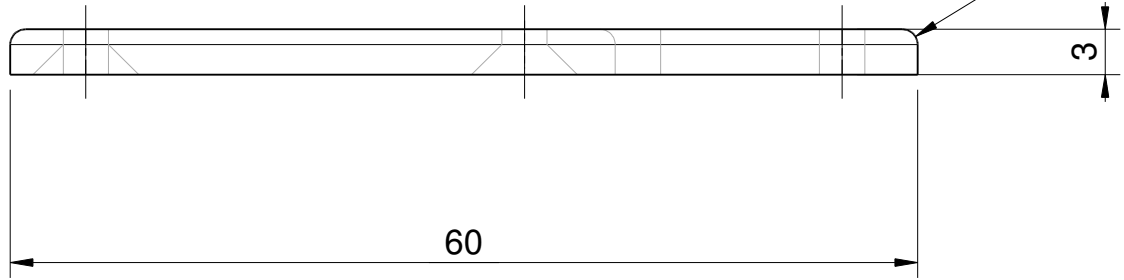
V-Twin KELSEY	
General Arrangement	1
Material	Scale 1:1



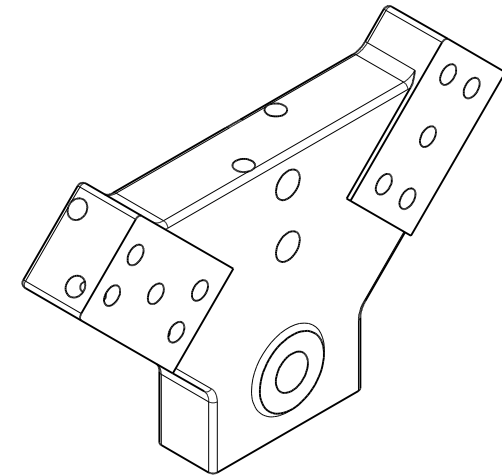
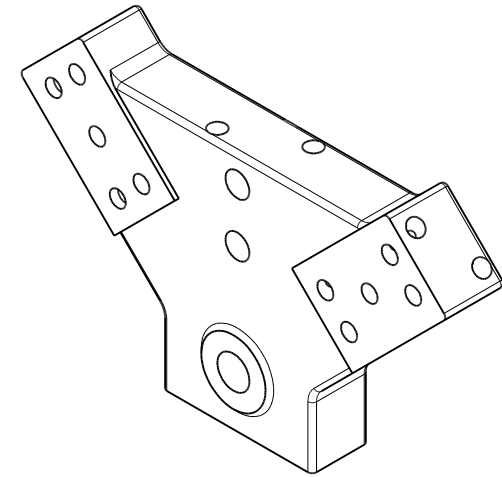
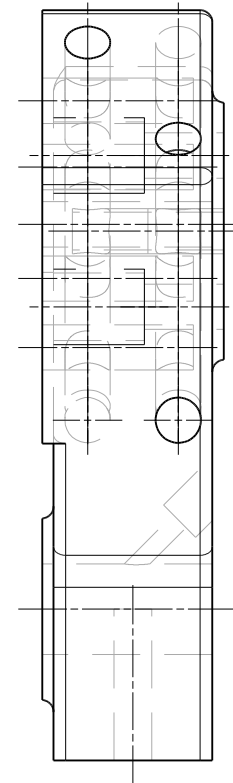
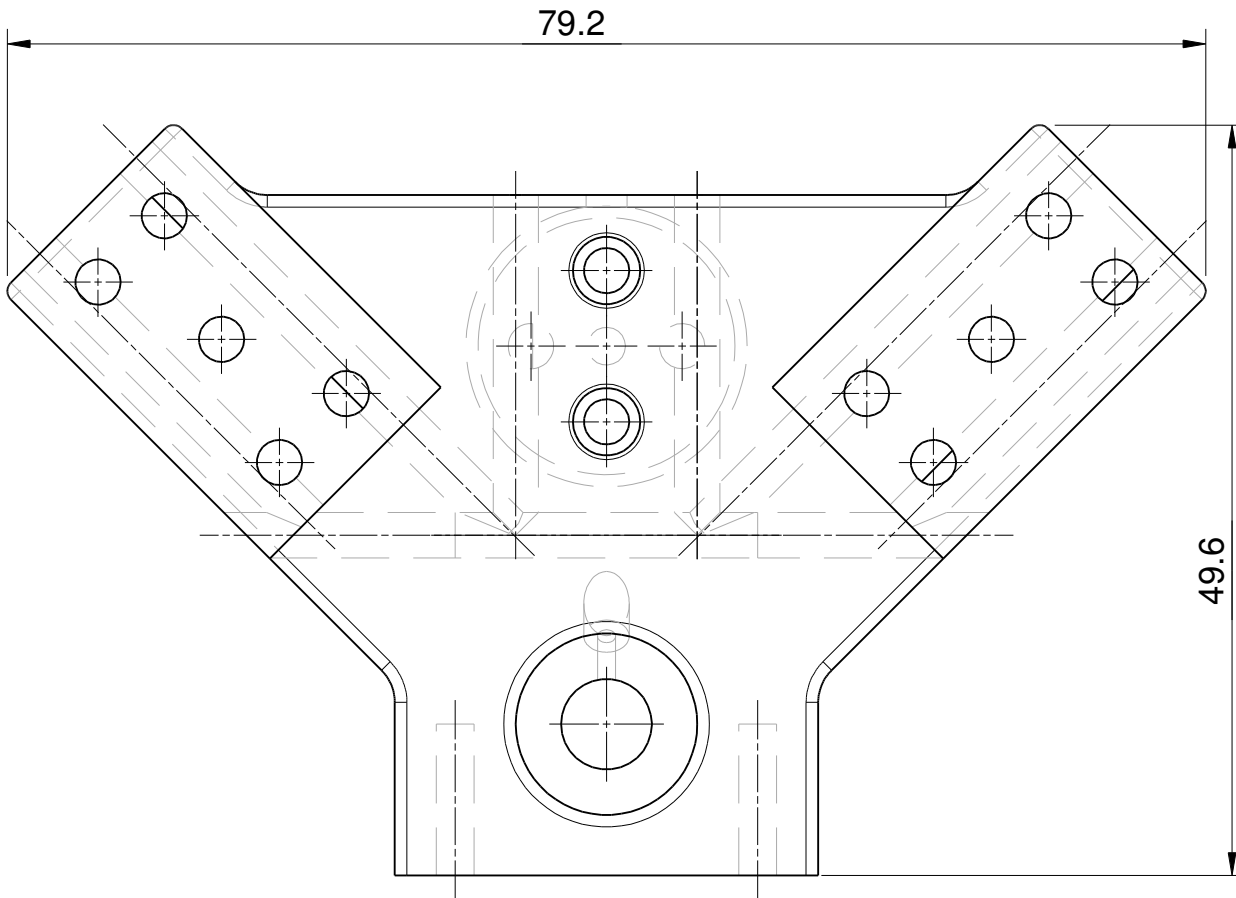
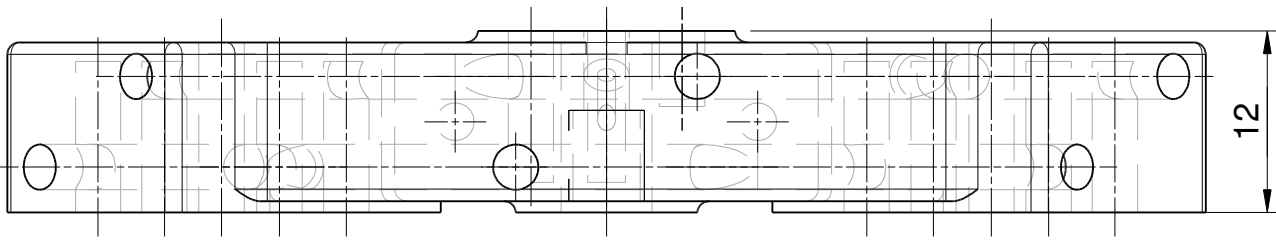
8No Ø3 ∇THRU

4No Countersunk on Underside To suit M3

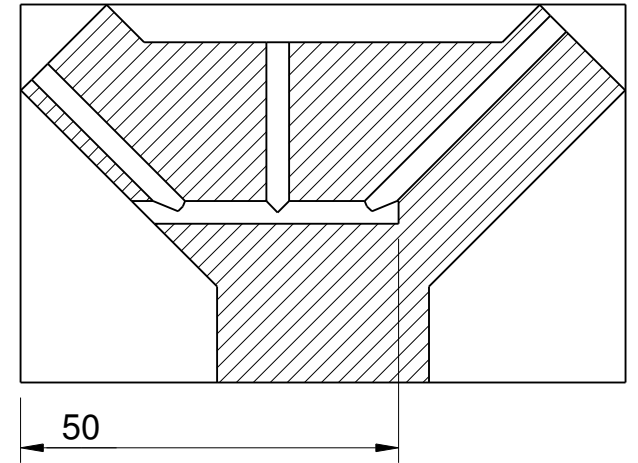
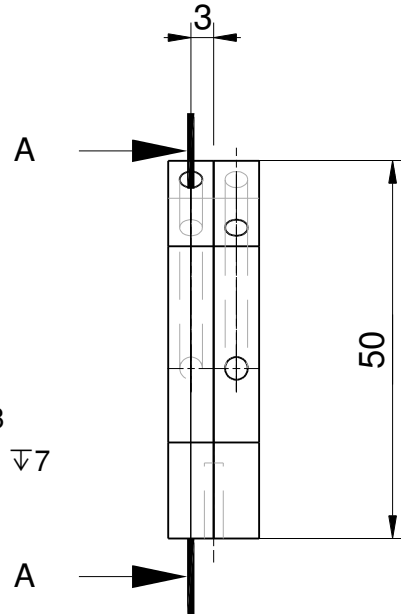
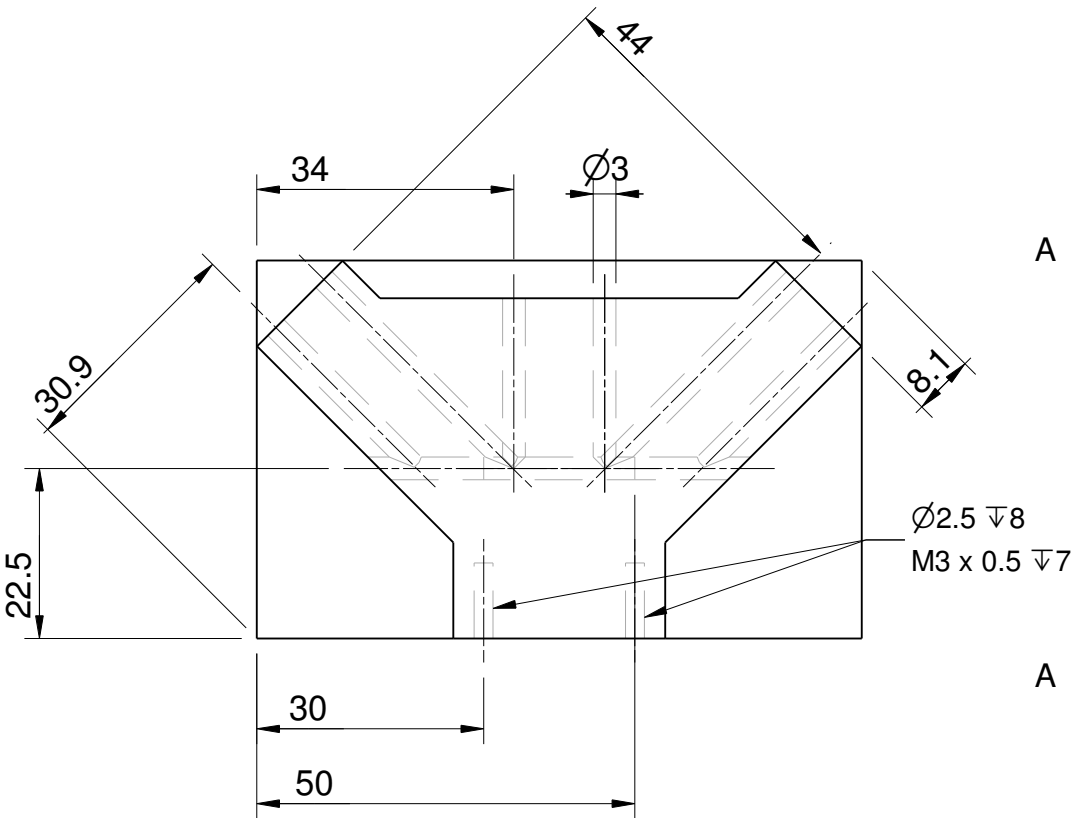
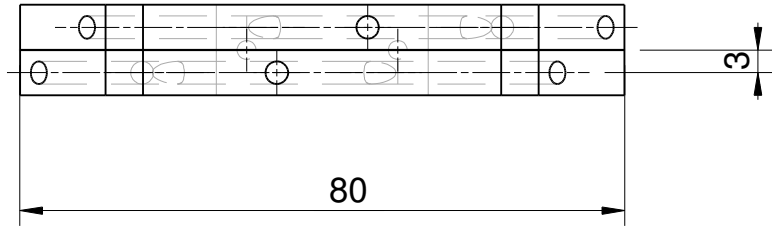
R1 Typical File After Assembly to Establish Extent



V-Twin KELSEY	
Base Plate	2
Material Steel	Scale 2:1

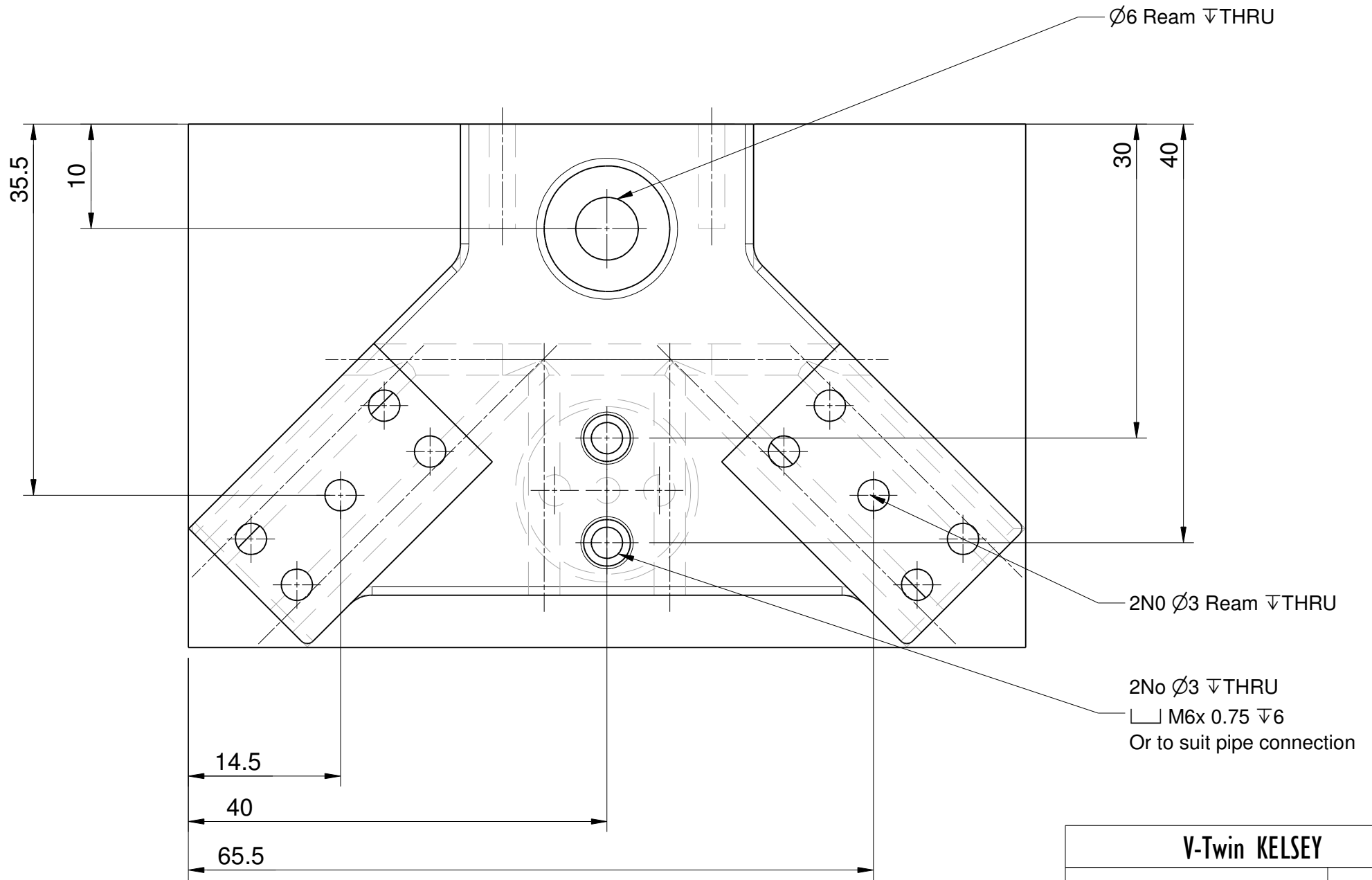


V-Twin KELSEY	
Standard	3
Material Brass	Scale 2:1

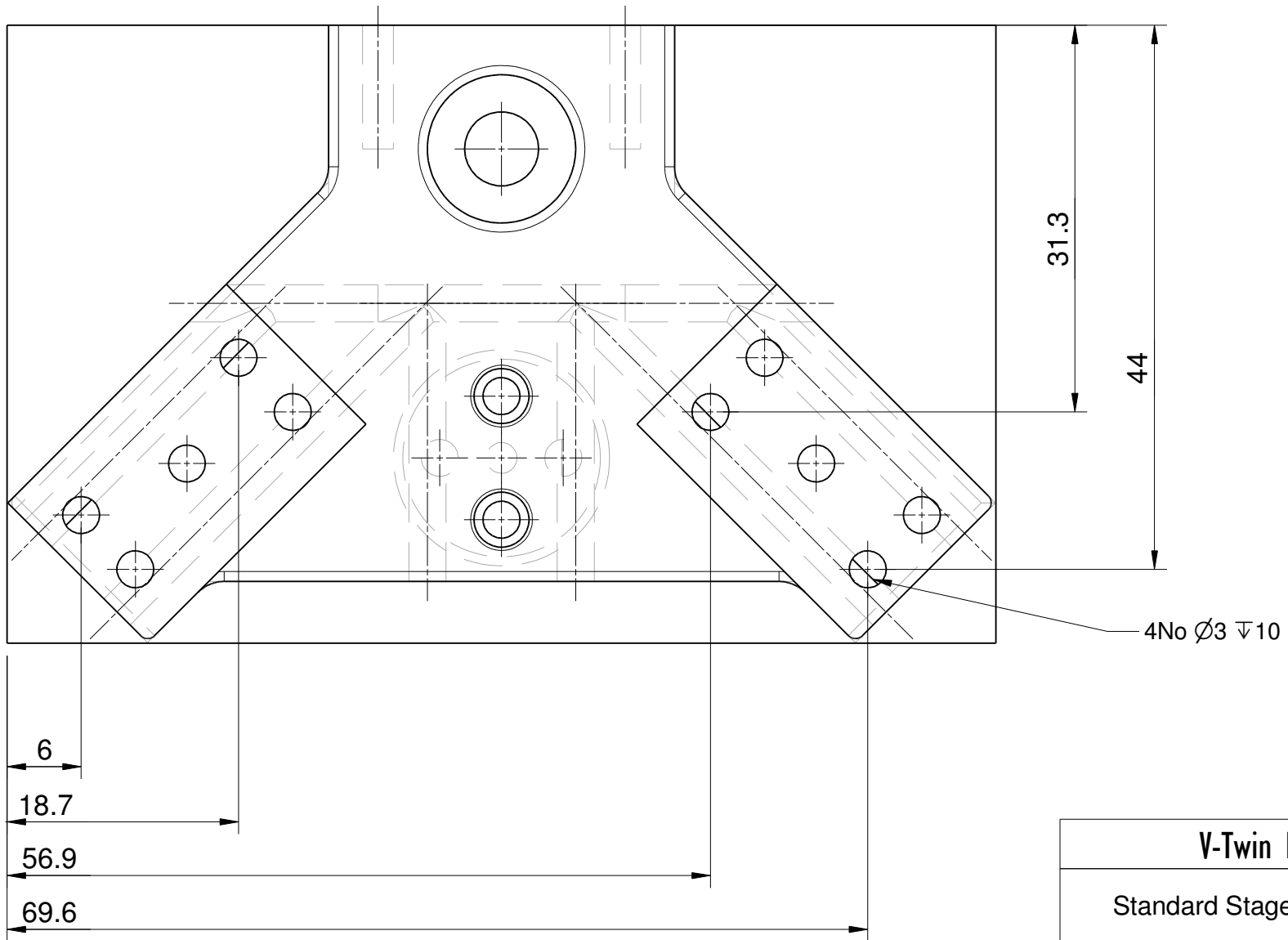


Section A-A

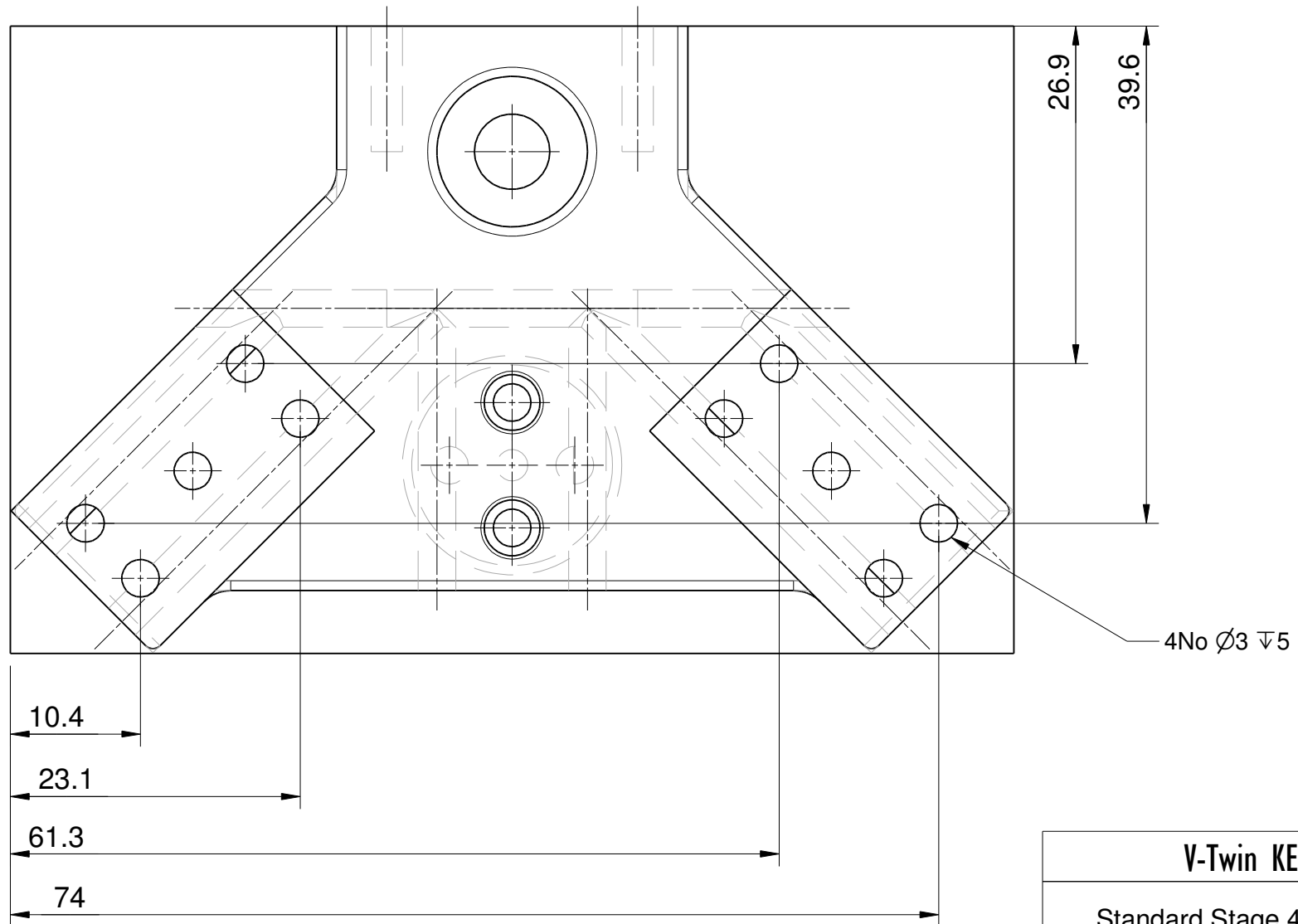
V-Twin KELSEY	
Standard Stage 1	4
Material Brass	Scale 1:1



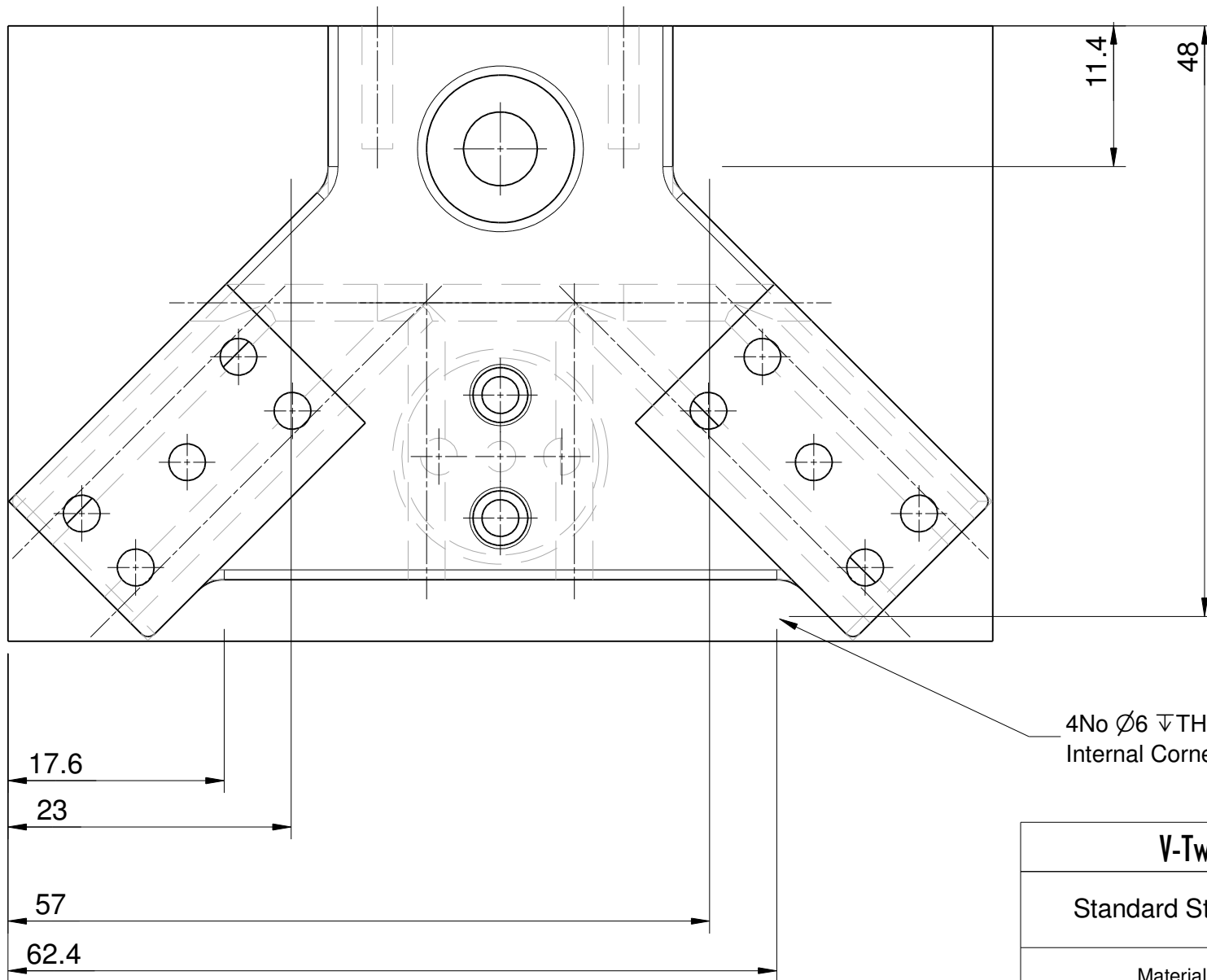
V-Twin KELSEY	
Standard Stage 2	5
Material Brass	Scale 2:1



V-Twin KELSEY	
Standard Stage 3	6
Material Brass	Scale 2:1

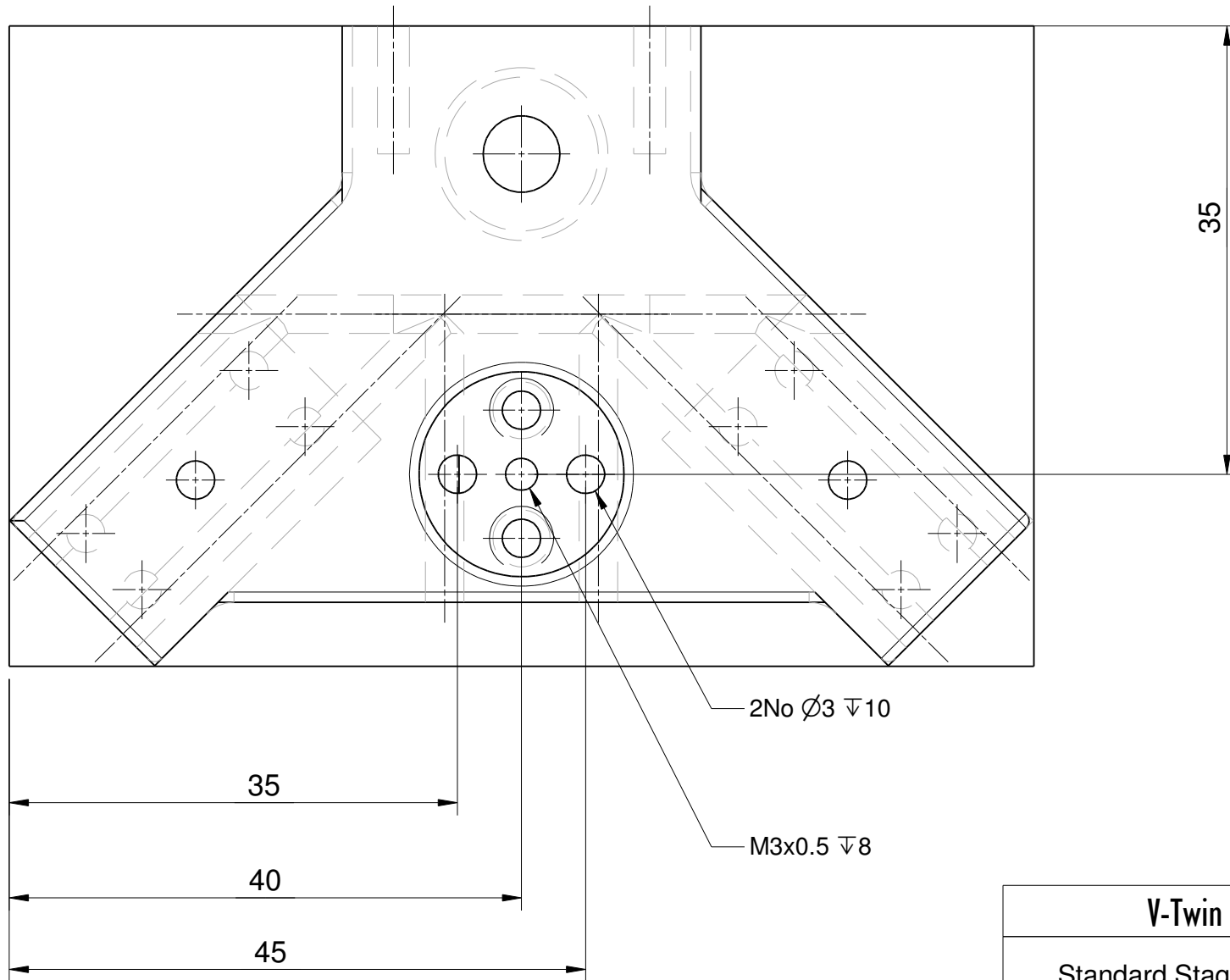


V-Twin KELSEY	
Standard Stage 4	7
Material Brass	Scale 2:1

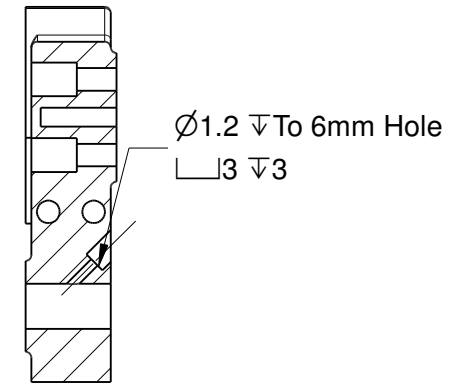
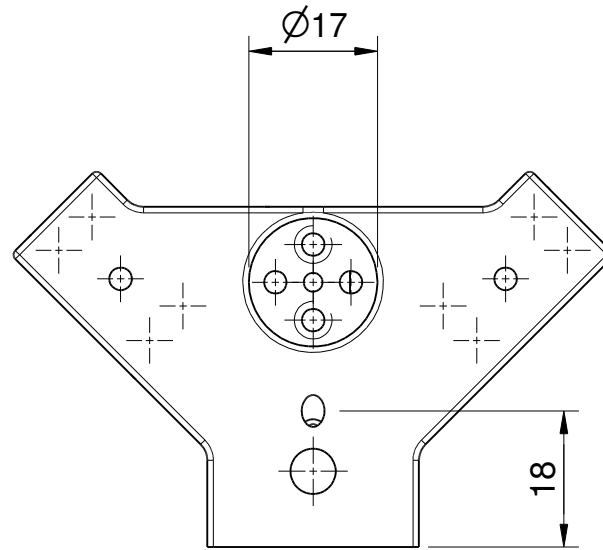
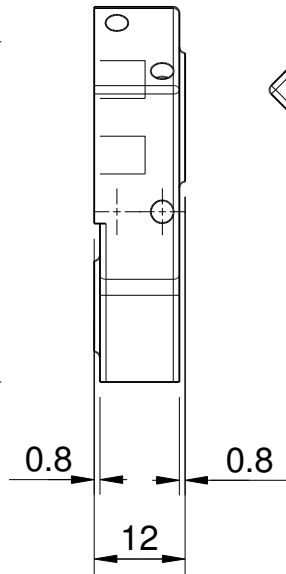
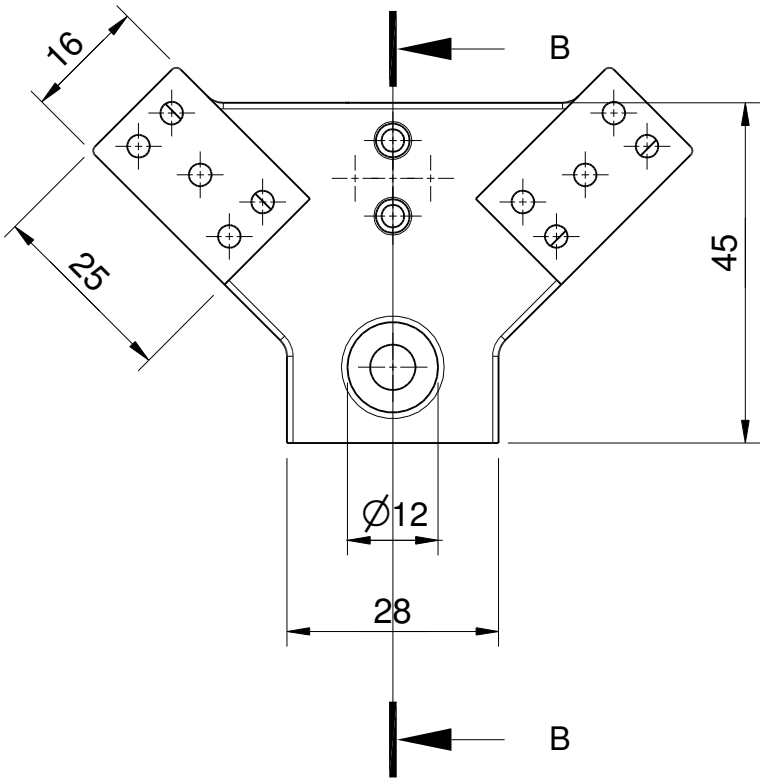
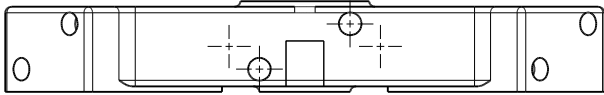


4No $\varnothing 6$ ∇ THRU
Internal Corner Radii

V-Twin KELSEY	
Standard Stage 5	8
Material Brass	Scale 2:1

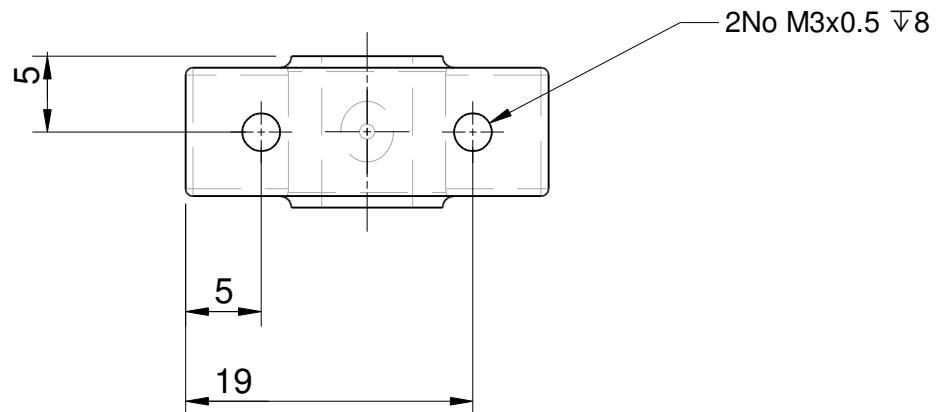
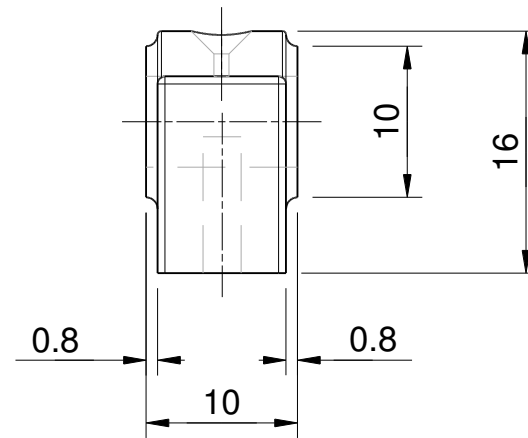
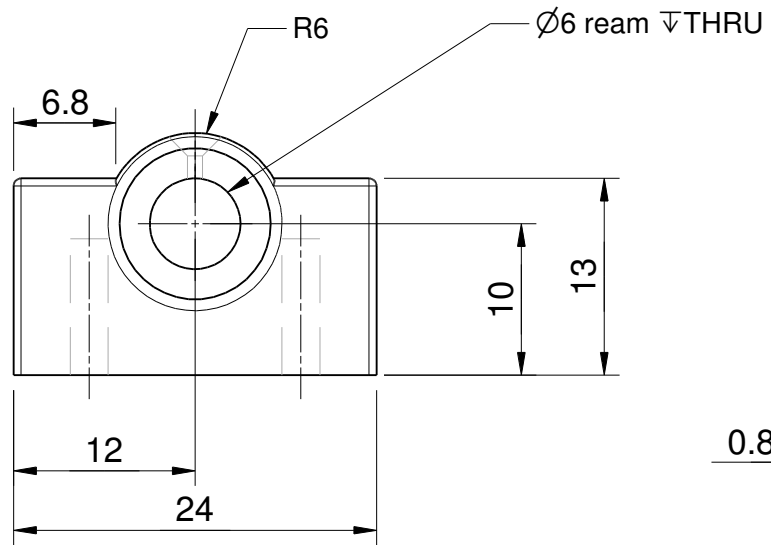
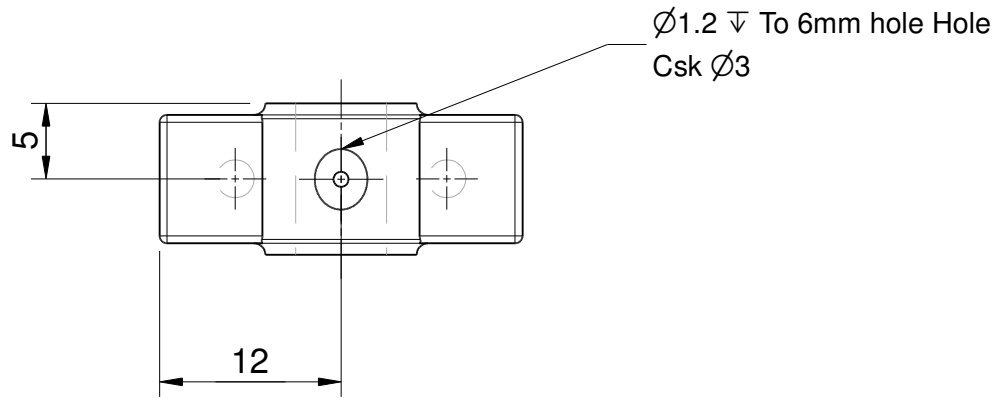


V-Twin KELSEY	
Standard Stage 6	9
Material Brass	Scale 2:1

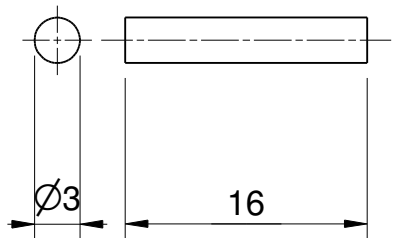


Section B-B

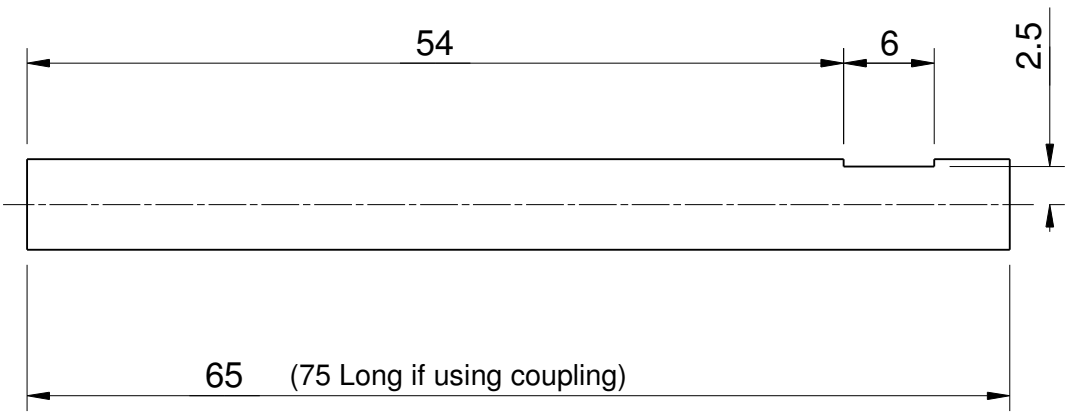
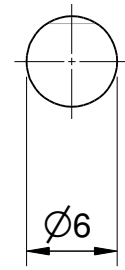
V-Twin KELSEY	
Standard Stage 7	10
Material Brass	Scale 1:1



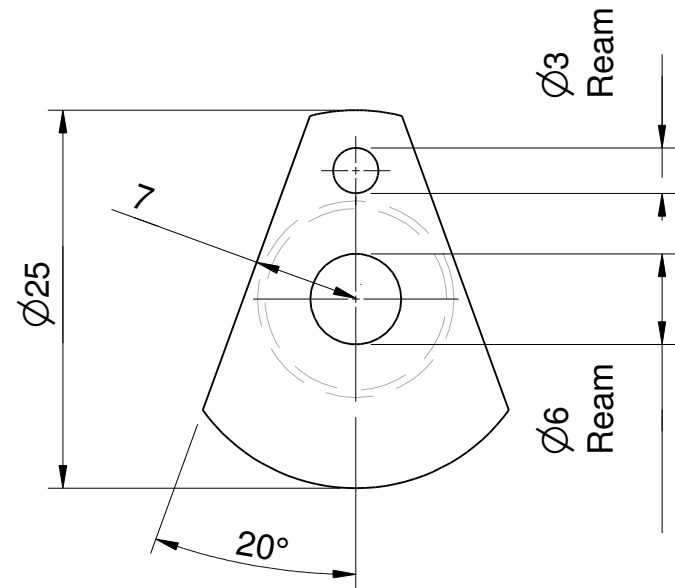
V-Twin KELSEY	
Bearing Block	11
Material Brass	Scale 2:1



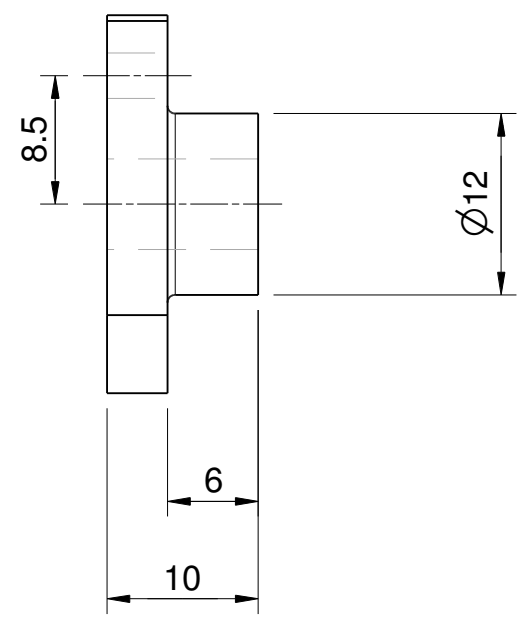
Crank Pin Silver Steel



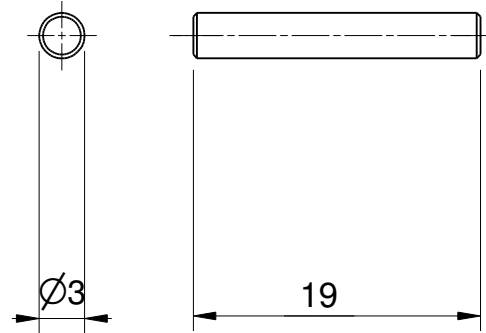
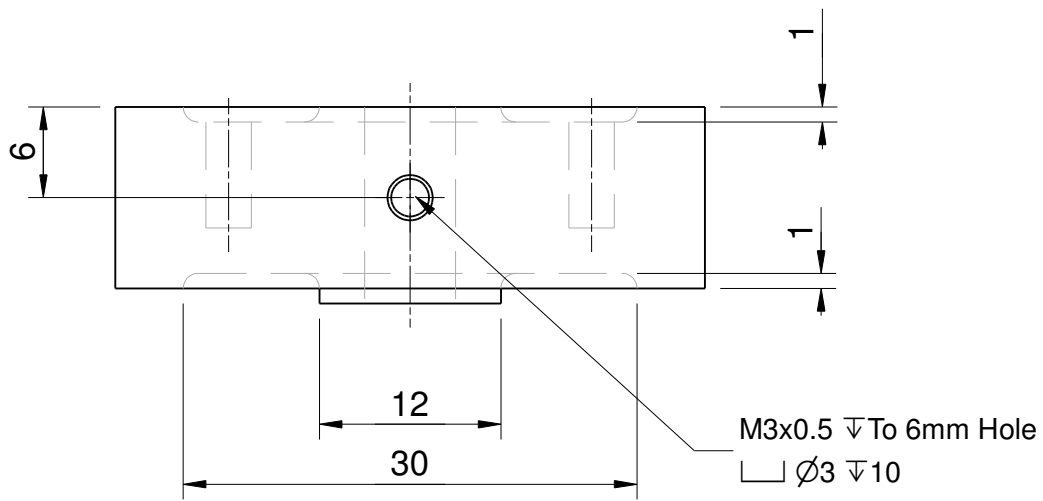
Crank Shaft Precision Ground Mild Steel



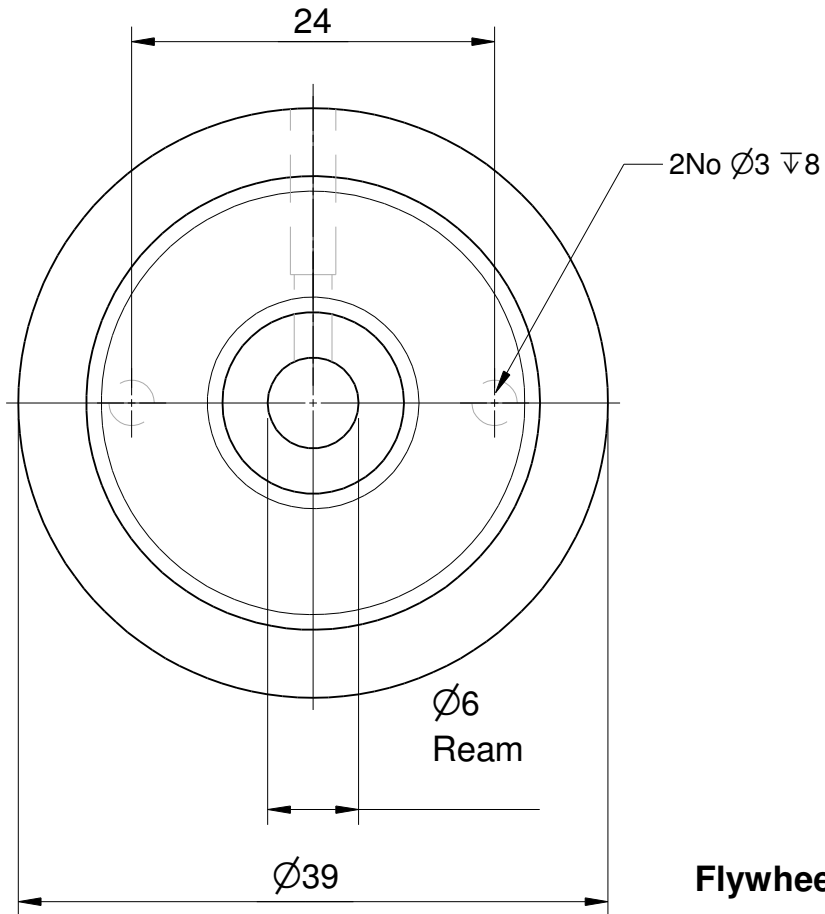
Crank Cast Iron



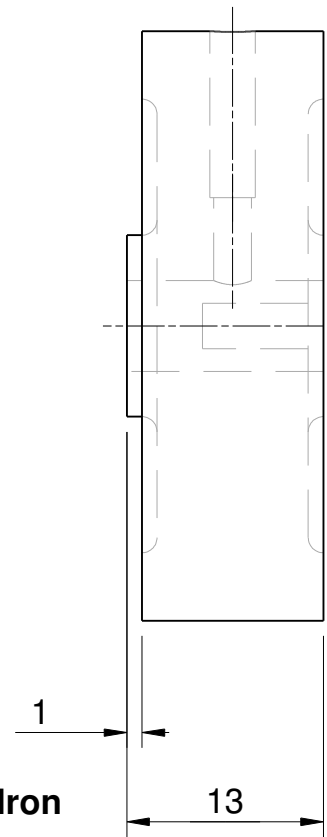
V-Twin KELSEY	
Crankshaft Parts	12
Material As Noted	Scale 2:1



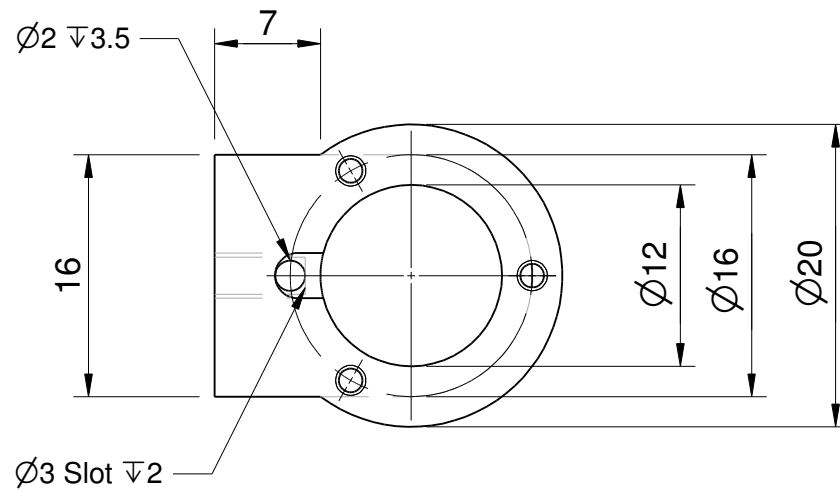
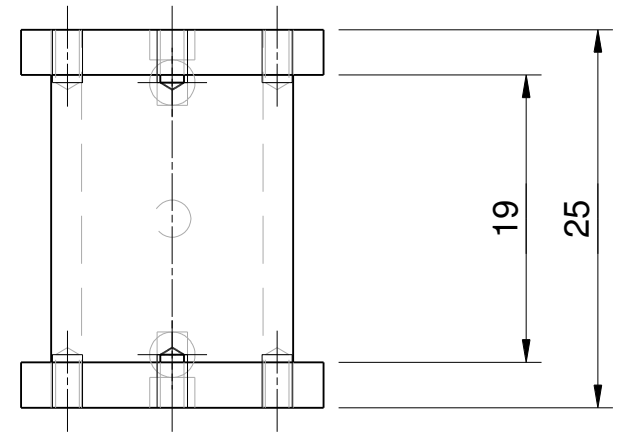
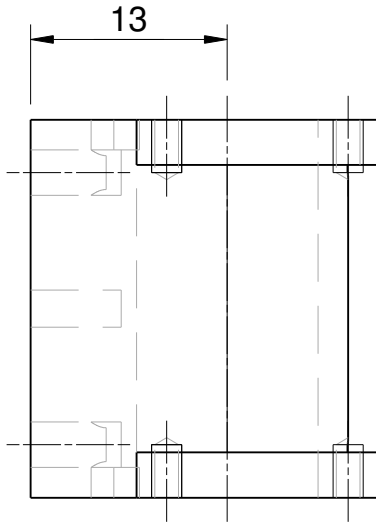
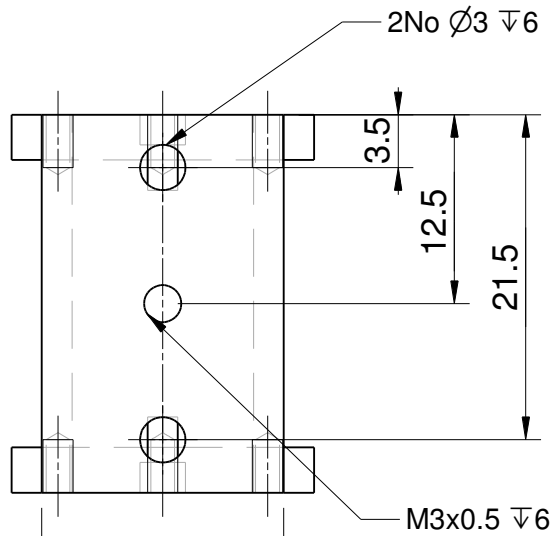
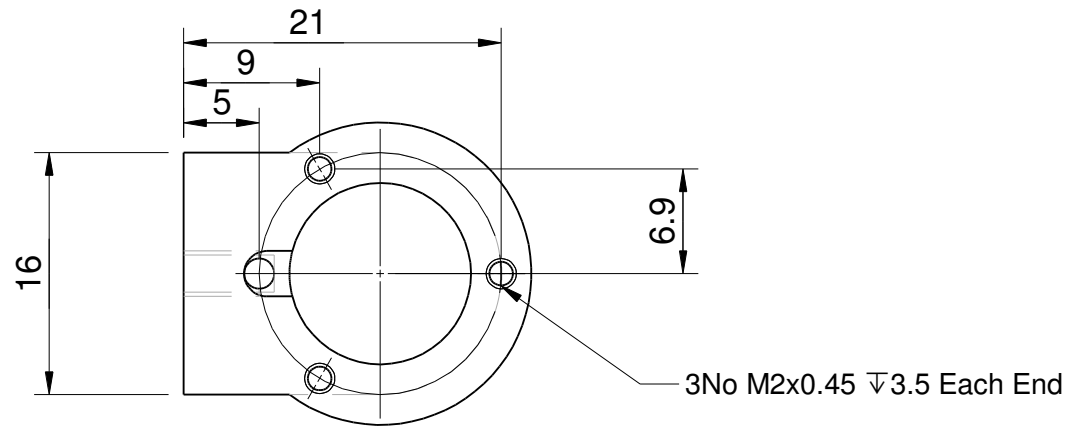
Drive Pin Silver Steel
2No Required



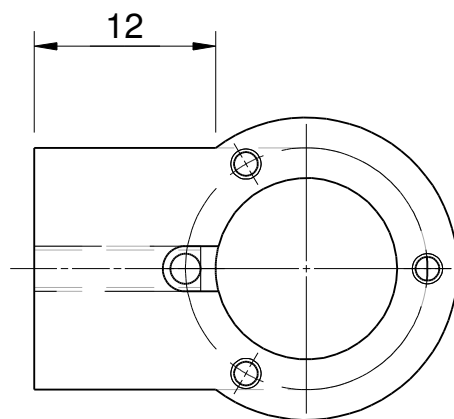
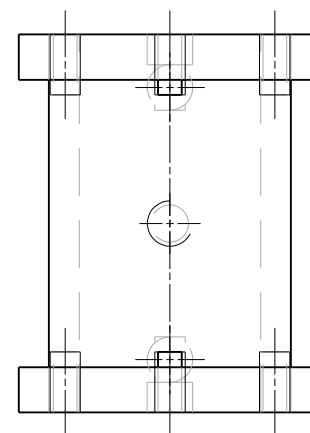
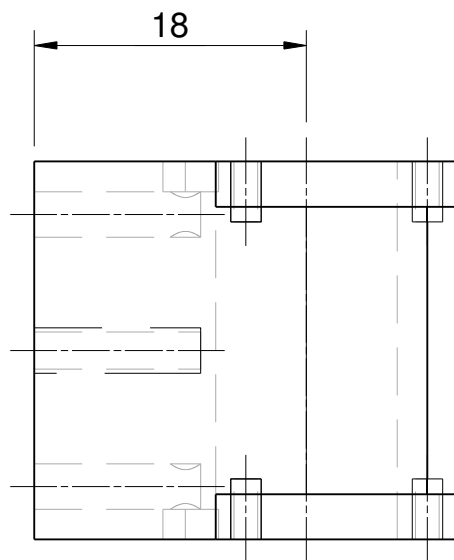
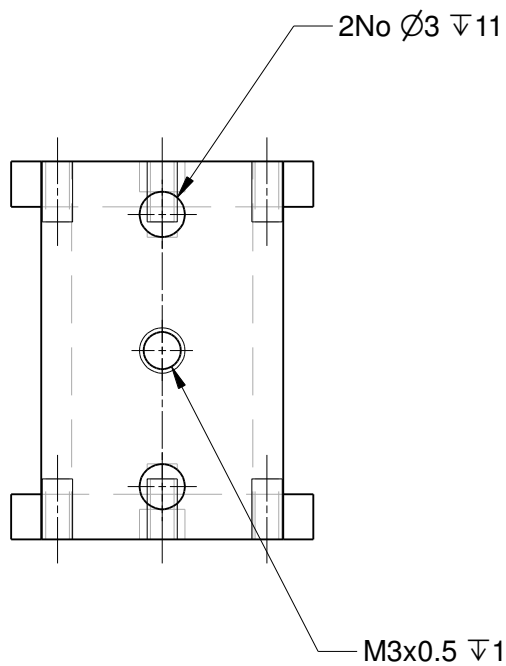
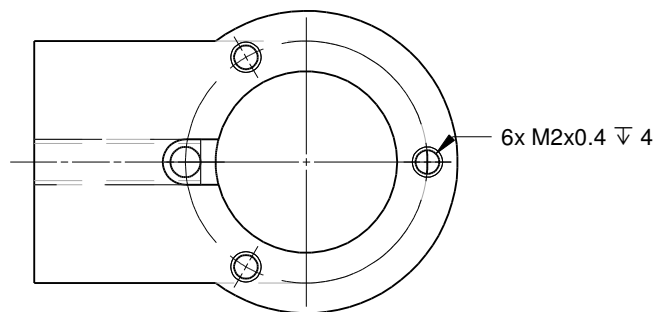
Flywheel Cast Iron



V-Twin KELSEY	
Flywheel	13
Material As Noted	Scale 2:1

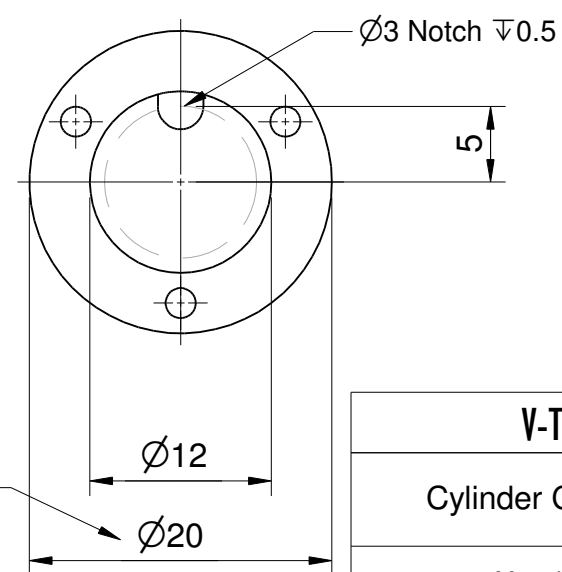
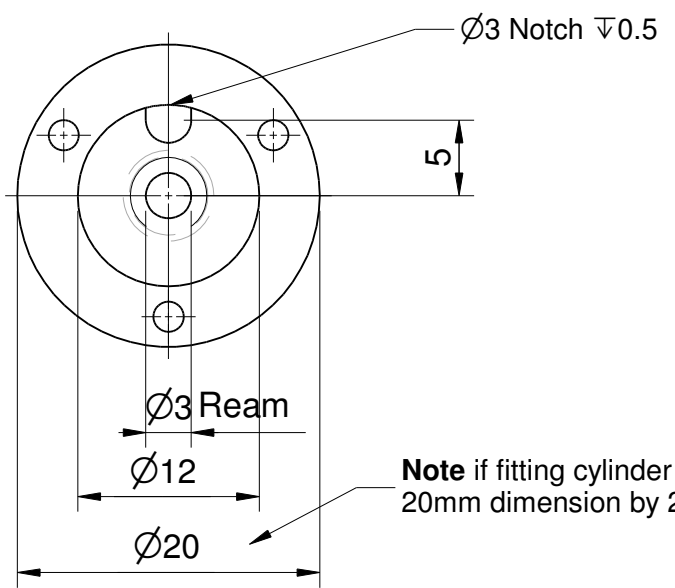
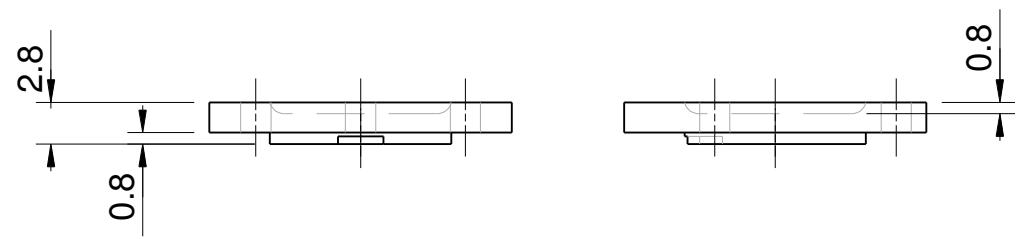
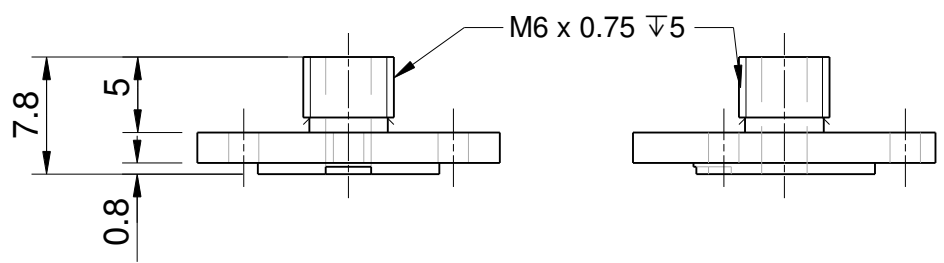
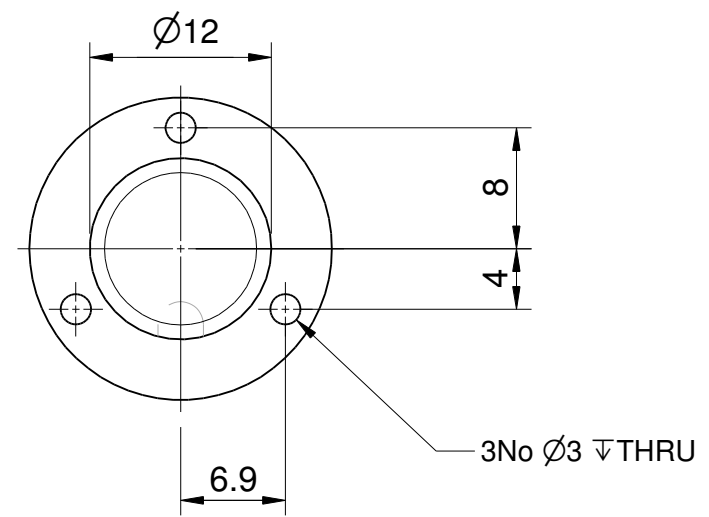
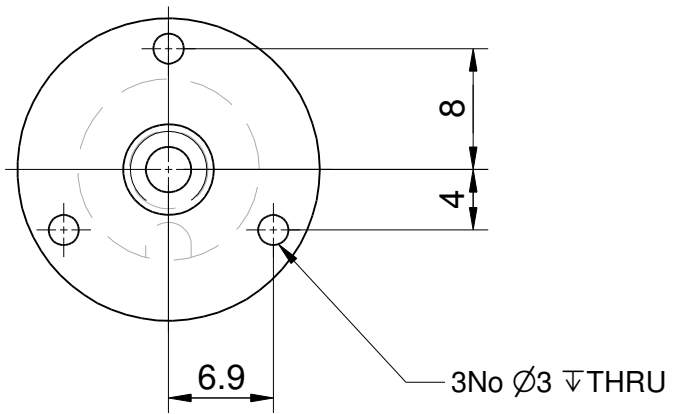


V-Twin KELSEY	
Right Cylinder	14
Material Cast Iron	Scale 2:1



ALL OTHER DETAILS AS RIGHT HAND CYLINDER

V-Twin KELSEY	
Left Cylinder	15
Material Cast Iron	Scale 2:1



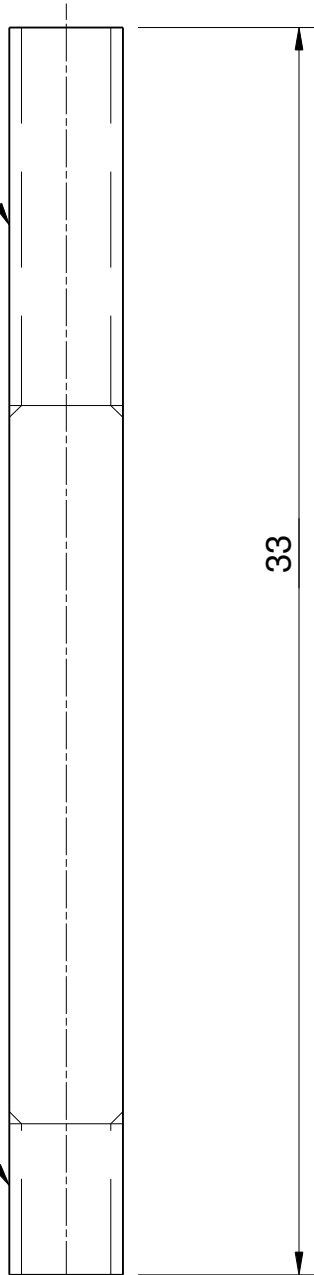
Note if fitting cylinder cladding increase 20mm dimension by 2 x cladding thickness

Bottom Cover 2No Req'd

Top Cover 2No Req'd

V-Twin KELSEY	
Cylinder Covers	16
Material Cast Iron	Scale 2:1

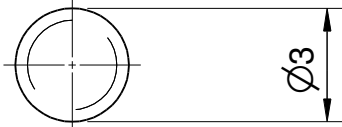
M3x0.5 ∇ 10



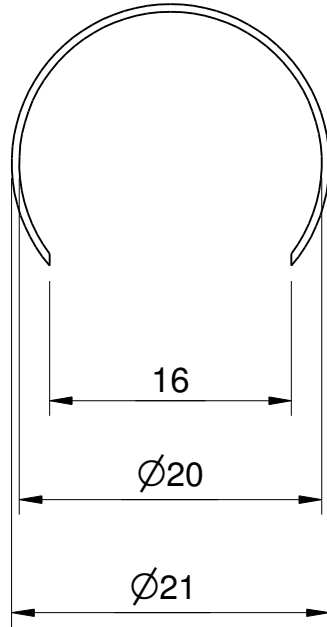
33

M3x0.5 ∇ 4

Cylinder Pivot
Stainless Steel
2No Req'd



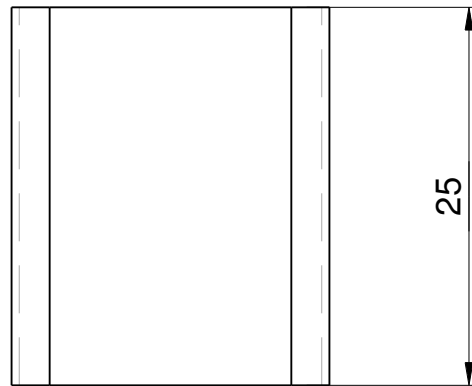
$\varnothing 3$



16

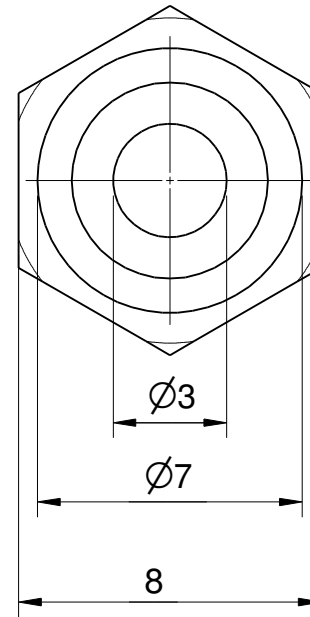
$\varnothing 20$

$\varnothing 21$



25

Cylinder Cladding
Copper 2No Req'd



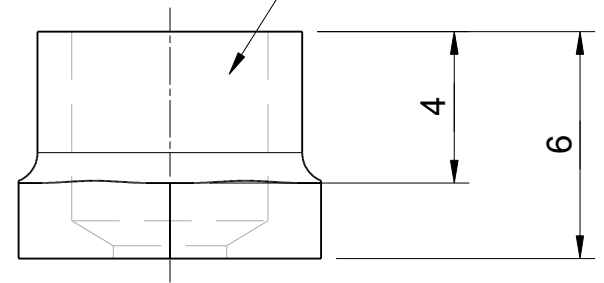
$\varnothing 3$

$\varnothing 7$

8

$\varnothing 3$ Ream ∇ THRU

M6x0.75 ∇ 5

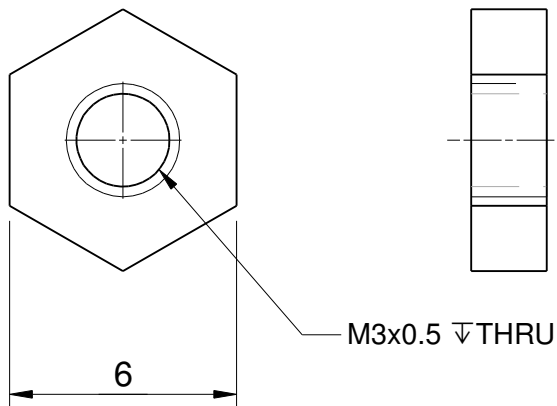
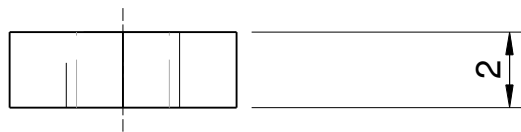
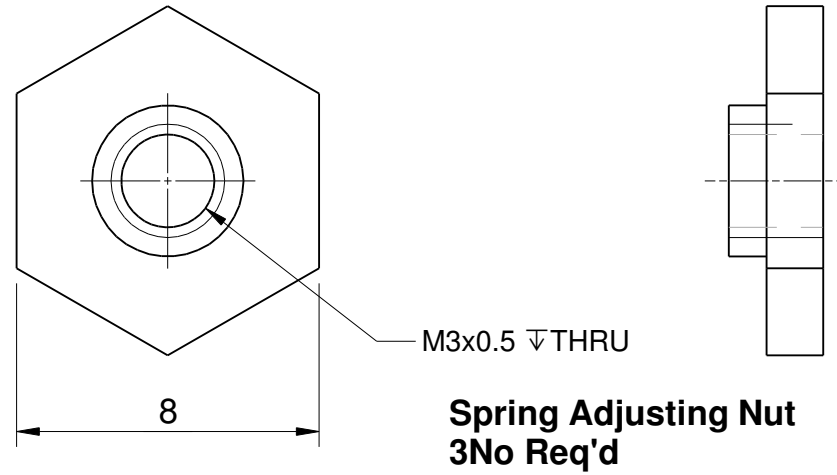
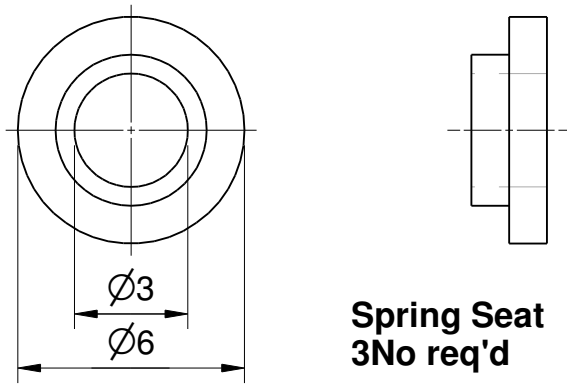
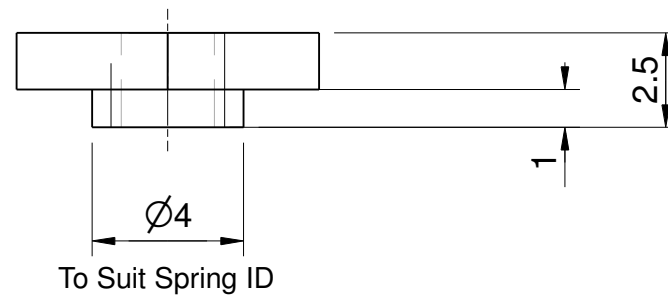
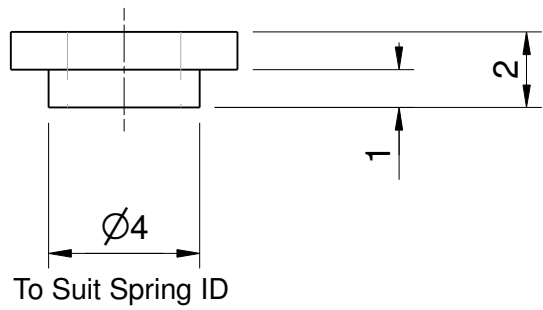


4

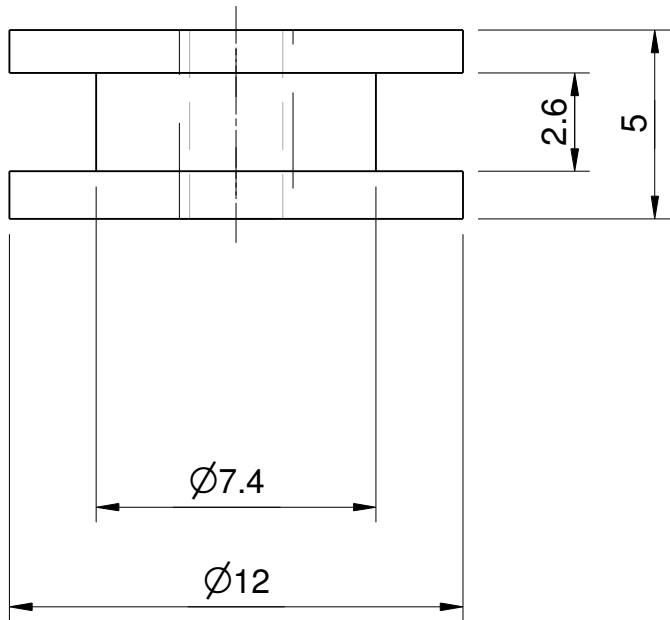
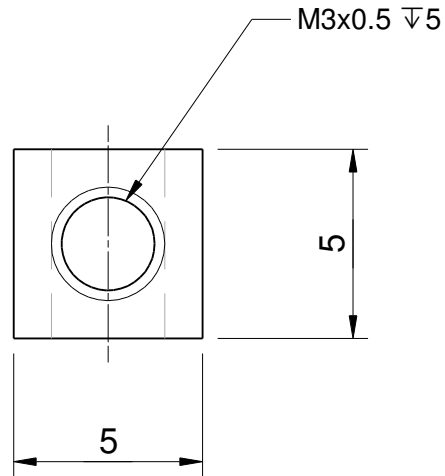
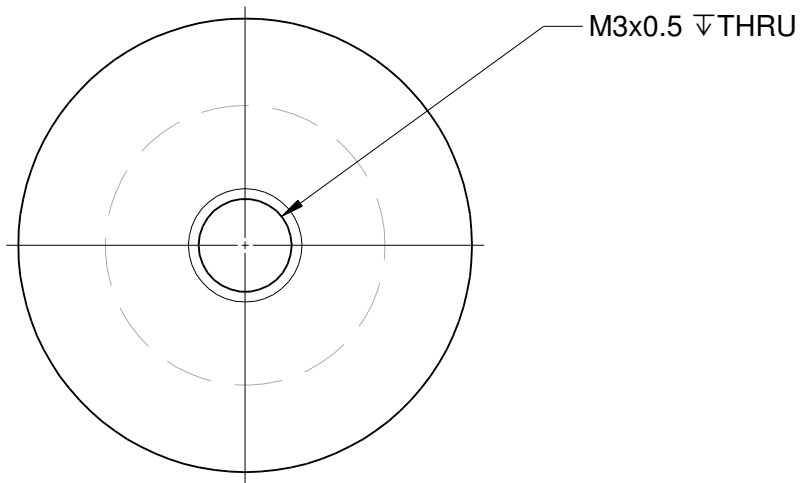
6

Gland Nut
Brass 2No Req'd

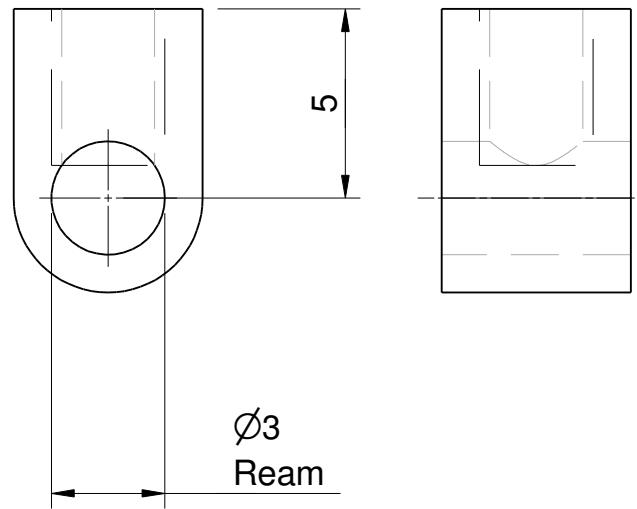
V-Twin KELSEY	
Cylinder Cladding Piston Gland Nut	17
Material As Noted	Scale 2:1 & 5:1



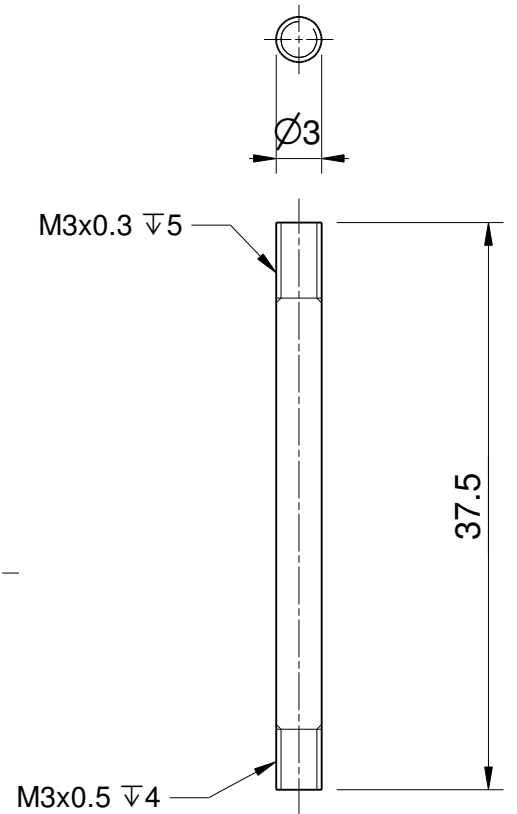
V-Twin KELSEY	
Spring Seats & Nuts	18
Material Brass	Scale 5:1



**Piston
Brass 2No Req'd**

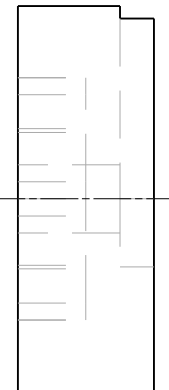
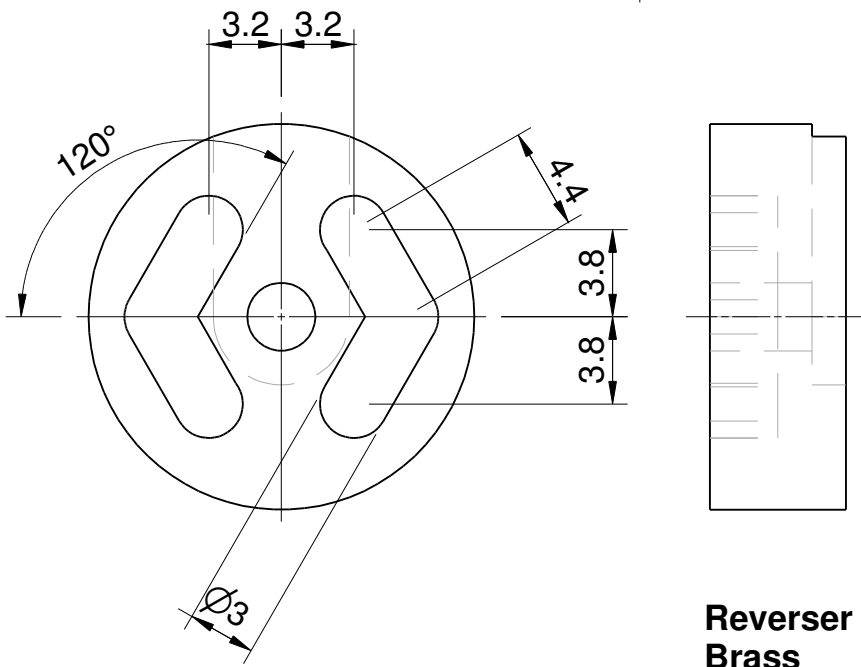
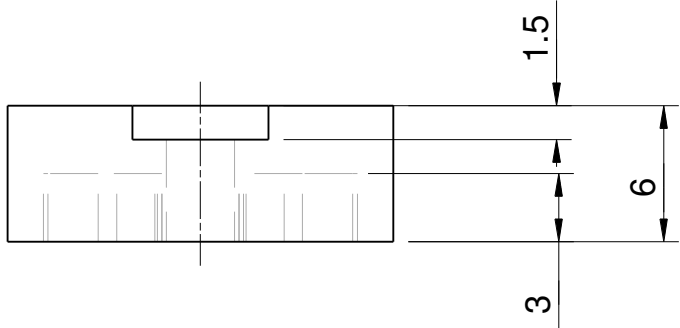


**Big End
Brass 2No Req'd**

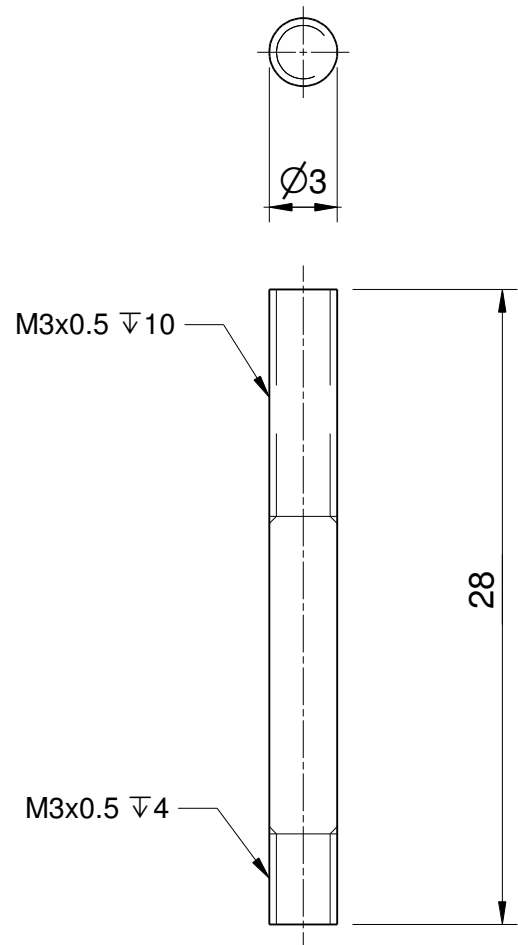
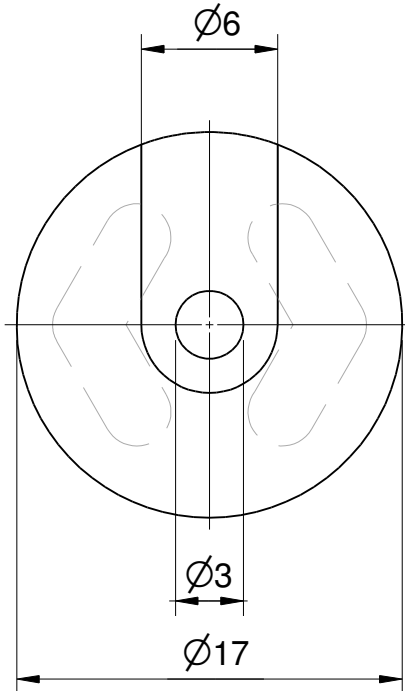


**Piston Rod
Stainless Steel 2No Req'd**

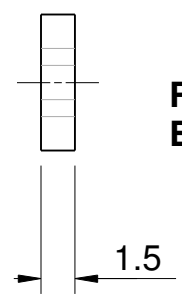
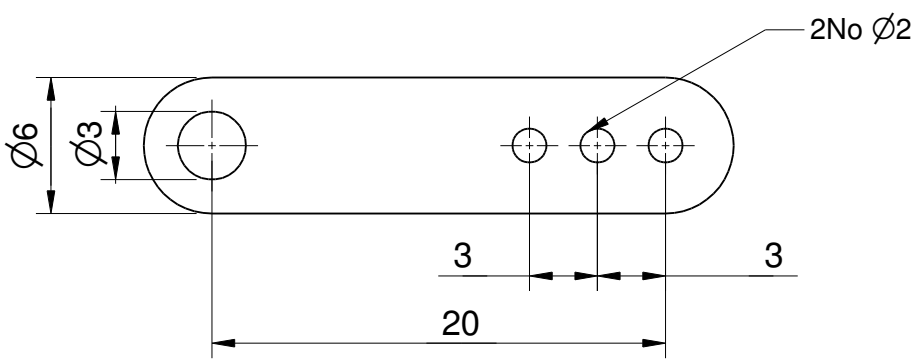
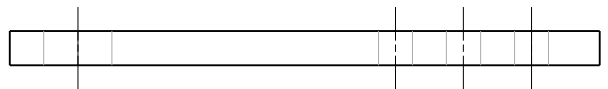
V-Twin KELSEY	
Piston Parts	19
Material As Noted	Scale 5:1 & 2:1



Reverser Brass



**Reverser Pivot
Stainless Steel**



**Reverser Lever
Brass**

V-Twin KELSEY	
Reverser Parts	20
Material As Noted	Scale 3:1