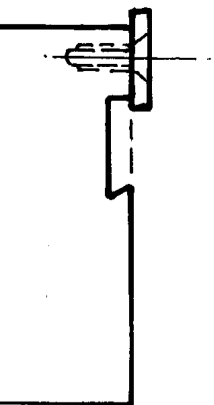


TWO WASHERS
CHECK C/SUNK TO
SCREWS.



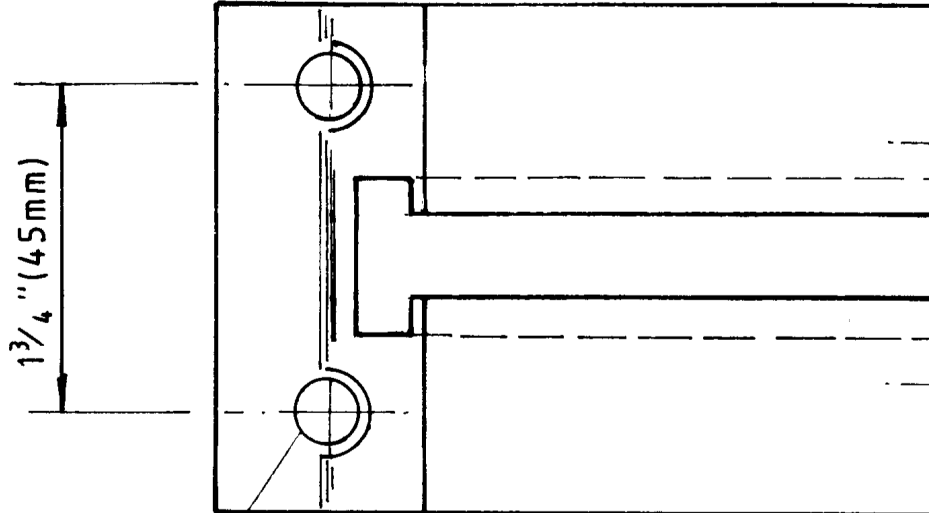
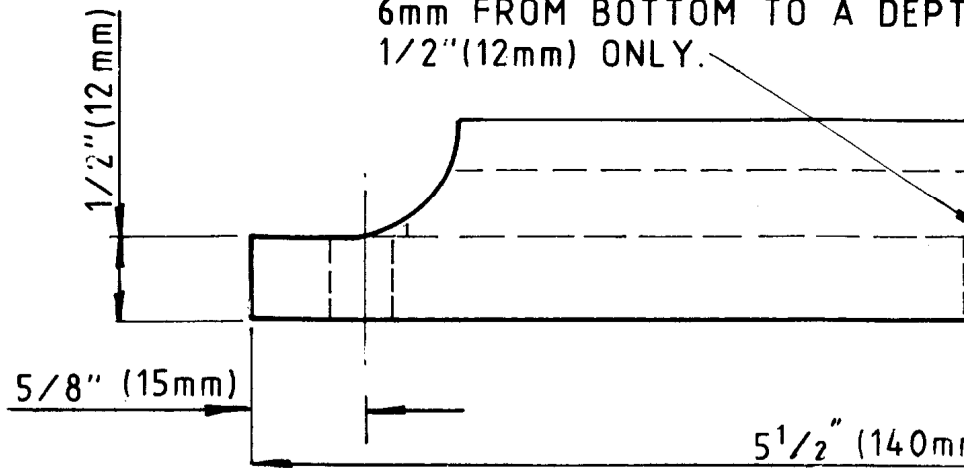
VIEW

LOT
EXAGGERATED
ANGLES TO MATCH

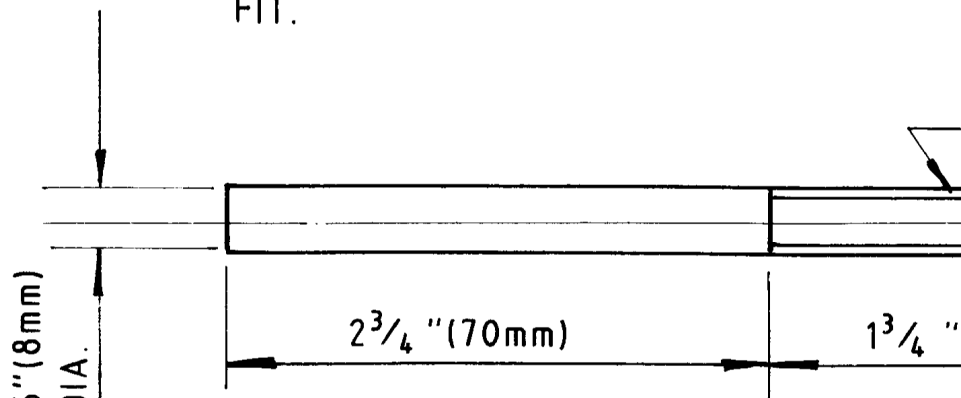
OL SLOT TO
CHINE AT AN
N, TO ALLOW
TO CENTRE

ST
CAST IRON.

TWO HOLES TAPPED 1/4" B.S.F.
6mm FROM BOTTOM TO A DEPT
1/2" (12mm) ONLY.



TWO CLEARANCE HOLES FOR CAP
SCREWS 5/16" (8mm) DIA. OR TO
SUIT LATHE. HALF ROUND
RECESSED TO ALLOW CAPS TO
FIT.



SUPPORT STUDS.
TWO OFF MILD STEEL.