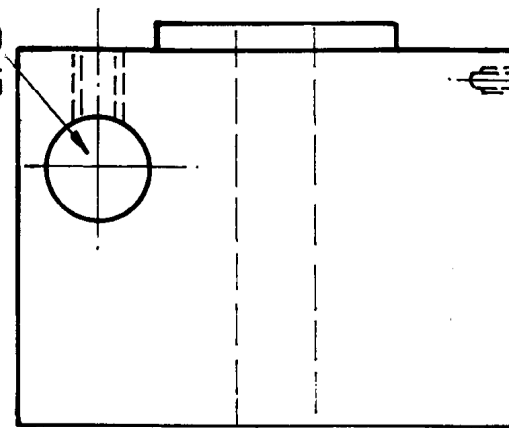
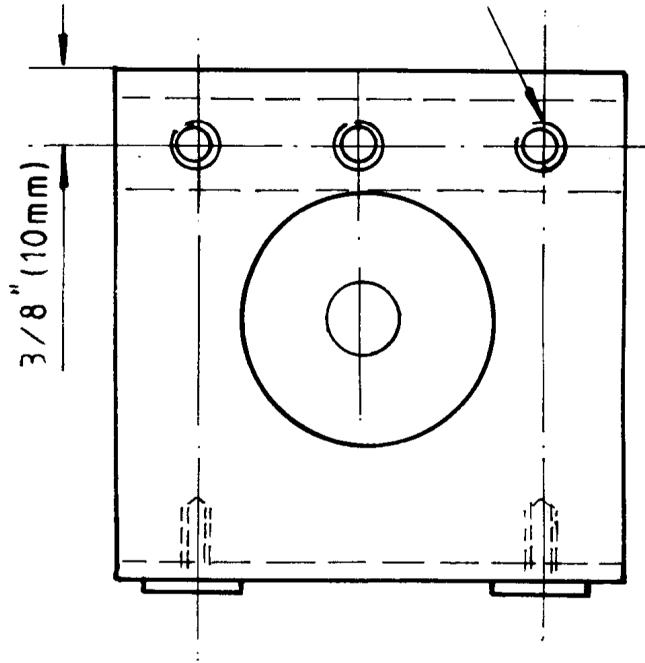


PARTING TOOL SECURED WITH TWO W  
 1/2" (12mm) DIA x 3/32" (2.5mm) THICK C/  
 ACCEPT 25 A. (4m) C/SUNK SCREWS.

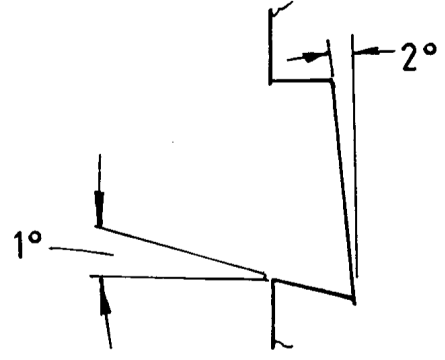
DRILL HOLE TO  
 ACCEPT BORING  
 BAR AT LATHE  
 CENTRE HEIGHT.



THREE HOLES TAPPED  
 1/4" (6mm) FOR SCREWS  
 TO SECURE BORING BAR.



TOOL IS SHOWN IN TOP L.H. VIEW



ENLARGED DETAIL OF SLOT  
 WITH ANGLES SHOWN EXAGGERATED  
 FOR CLARITY. SLOT ANGLES  
 STANDARD TOOLS.

HEIGHT & WIDTH OF TOOL SUIT  
 SUIT LATHE & TOOL MACHINE  
 ANGLE OF 2° AS SHOWN, TO  
 TOOL TO BE ADJUSTED TO C  
 HEIGHT.

SUPPLEMENTARY TOOL POST.

FROM MILD STEEL OR CAST