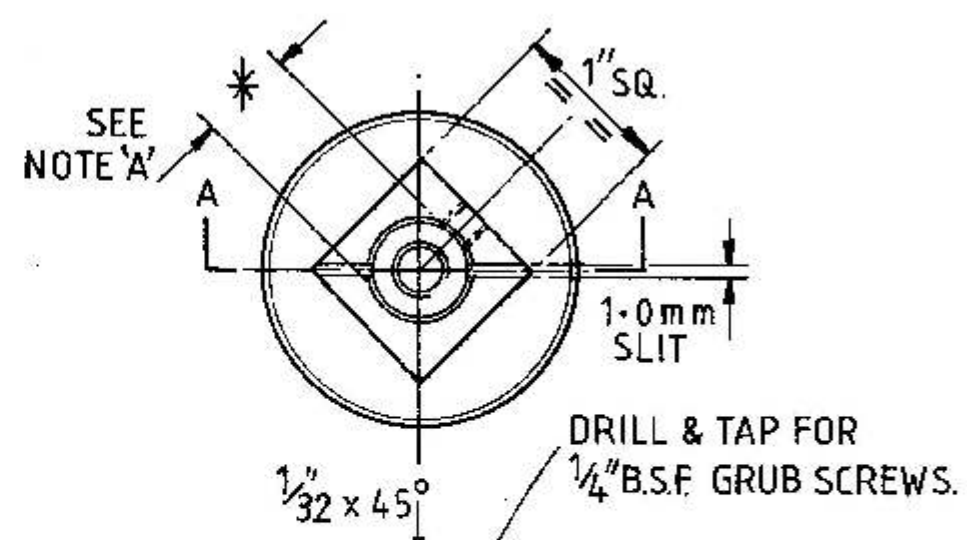


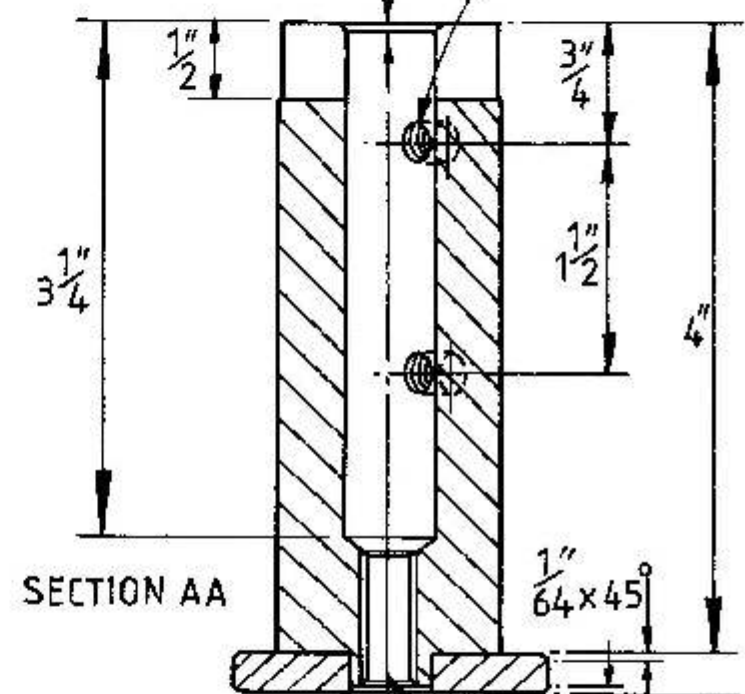
* NOTES : A & B — BORES * TO SUIT CUTTERS UP TO 1/2" Ø (OR 12mm)
 NOTE : C BORE * TO SUIT CUTTERS UP TO 1" Ø (OR 25mm)
 FOR CUTTERS OF OTHER DIAMETERS MAKE SPLIT SLEEVES.

MATERIAL : 3/8"/1" AF B.M.S.
 2" Ø B.M.S.
 QTY. AS REQUIRED TO SUIT CUTTER SHANK DIAMETERS.
 CHUCKS FOR 3 & 6 FLUTE CUTTERS.

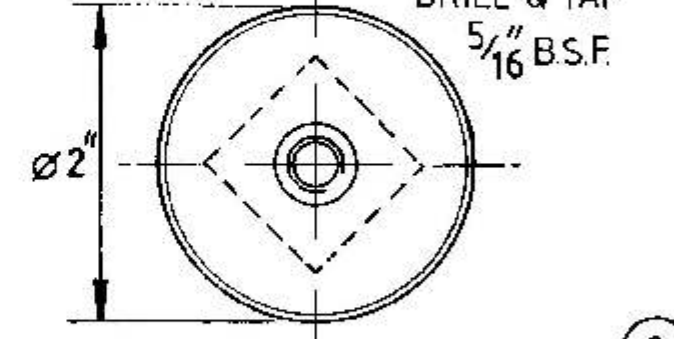
(2)



DRILL & TAP FOR 1/4" B.S.F. GRUB SCREWS.

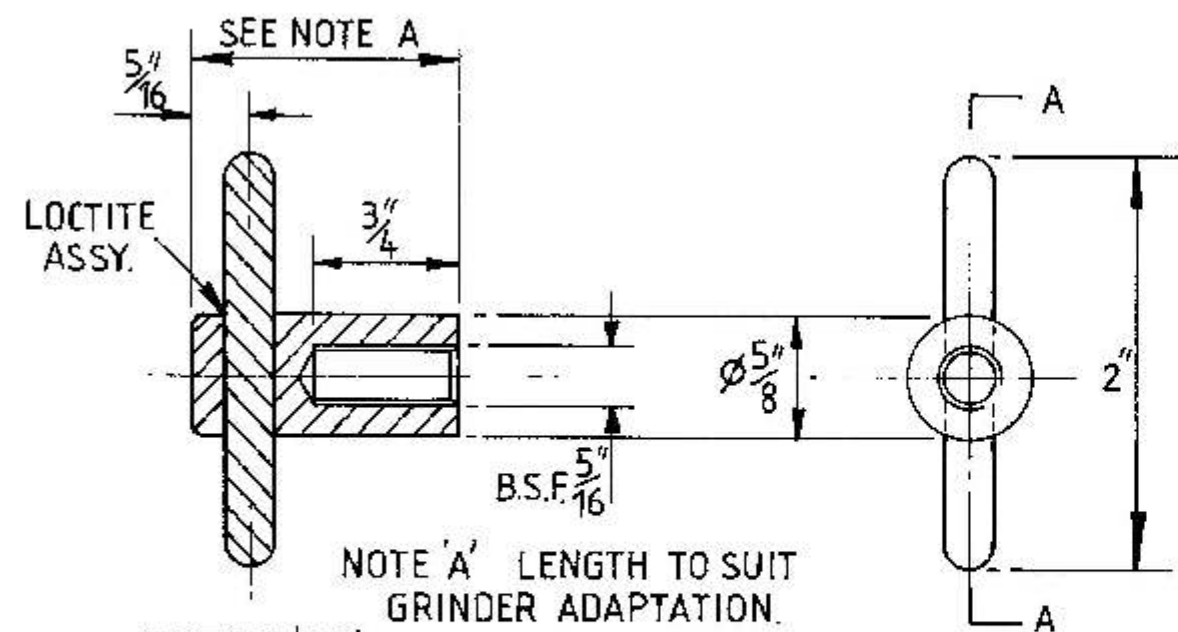


PRESS FIT & LOCTITE

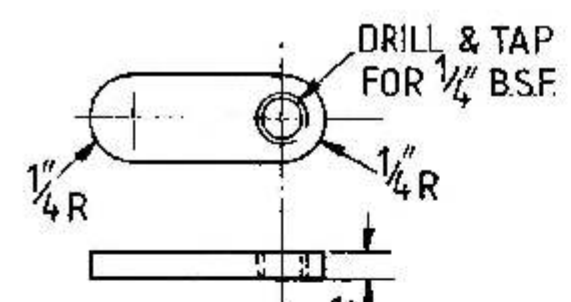


MAT: 1" SQ B.M.S.
 2" Ø B.M.S.
 QTY. AS REQUIRED TO SUIT CUTTER SHANK DIAMETERS
 CHUCK FOR 2 & 4 FLUTE CUTTERS

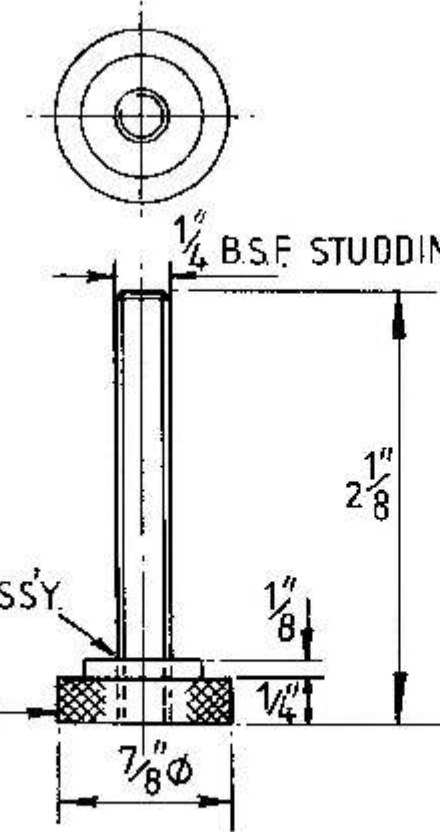
(2)



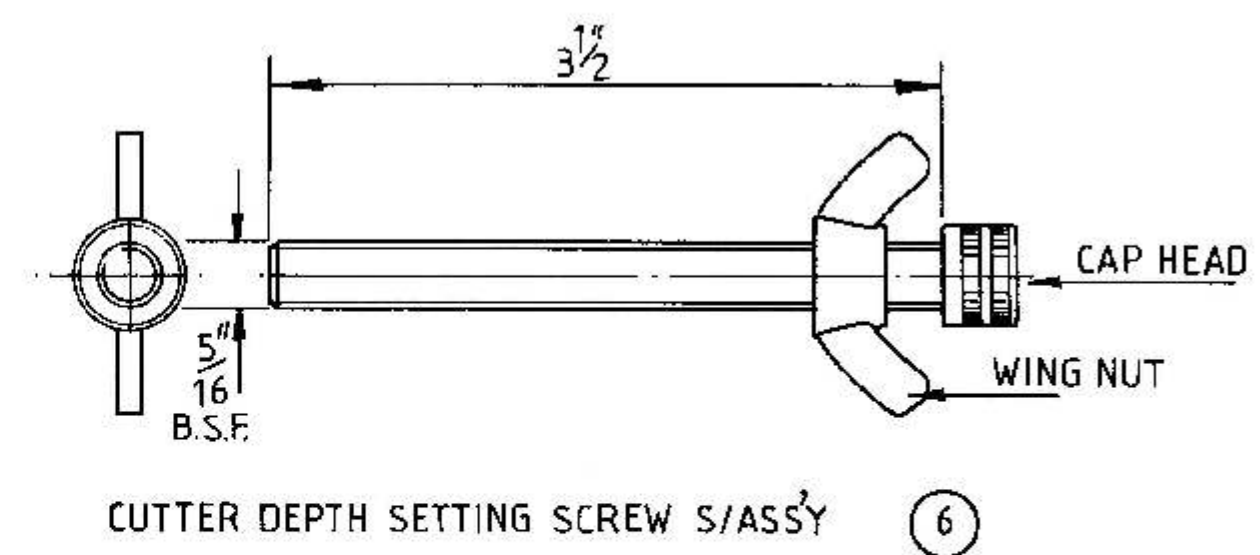
NOTE 'A' LENGTH TO SUIT GRINDER ADAPTATION.
 SECTION 'AA'
 MAT: 5/8" Ø B.M.S. 1/4" Ø B.M.S.
 1 OFF
 'T' BAR CLAMPING NUT (3)



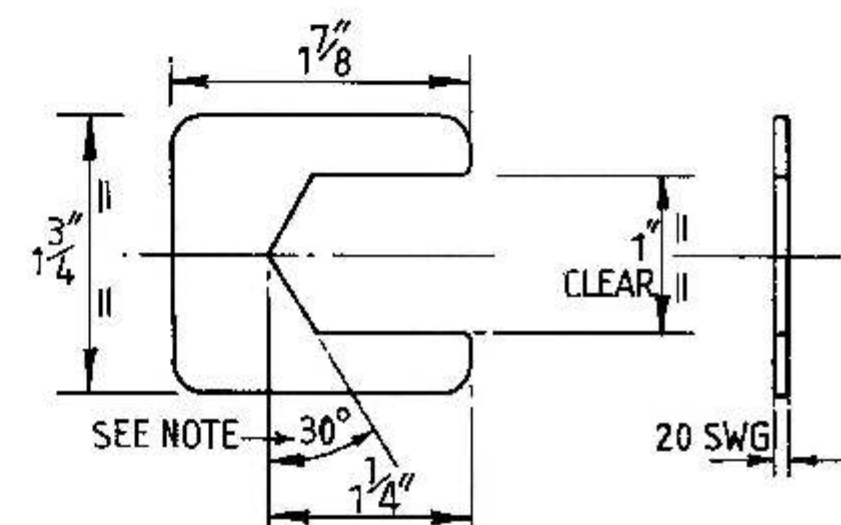
MAT: 1/2" x 1/8" B.M.S.
 1 OFF
 LOCKING LEVER (4)



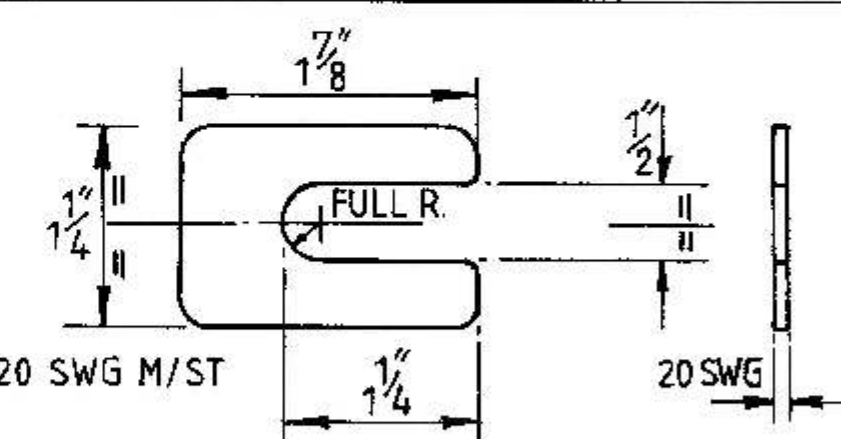
LOCTITE ASSY.
 STRAIGHT OR DIAMOND KNURL
 MAT: 1/4 B.S.F. STEEL STUDDING
 7/8 Ø B.M.S.
 1 OFF
 SETTING SCREW & LOCKING LEVER (5)



CUTTER DEPTH SETTING SCREW S/ASSY (6)



MAT: 20 SWG M/ST
 1 OFF
 LOCATOR PLATE FOR 3 & 6 FLUTE CUTTERS
 UP TO 1" (OR 25MM) Ø



MAT: 20 SWG M/ST
 1 OFF
 LOCATOR PLATE FOR 2 & 4 FLUTE CUTTERS
 UP TO 1/2" (OR 12MM) Ø
 ALSO FOR 3 & 6 FLUTE CUTTERS UP TO 1/2" (OR 12MM) Ø