

MEDIUM GRIT WHEEL —
SHARPEN CORNER ON
RIGHT HAND SIDE OF WHEEL.

SETTER SCREW (5)
LOCKING LEVER (4)

SLOT ADAPTOR BRACKET PARALLEL TO GRINDER
AXIS TO ENABLE JIG TO BE POSITIONED CORRECTLY
RELATIVE TO RIGHT HAND CORNER OF WHEEL.

ANGLE BRACKET TO SUIT
TOOLREST OF GRINDER (3)

ANGLE * END TEETH

TWO FLUTE SLOT DRILLS — SINGLE CLEARANCE : — 6°

FRACTIONAL : — ALL SIZES UP TO & INCLUDING 15/64

METRIC : — " " " " " 5.5mm

TWO FLUTE SLOT DRILLS — DOUBLE CLEARANCE : — 6° & 15°

FRACTIONAL : — ALL SIZES 1/4" AND ABOVE

METRIC : — " " 6mm " "

MULTI FLUTE END MILLS — END TEETH SINGLE CLEARANCE : — 6°

FRACTIONAL : — ALL SIZES UP TO & INCLUDING 25/32

METRIC : — " " " " " 20mm

MULTI FLUTE END MILLS — END TEETH DOUBLE CLEARANCE : 6° & 15°

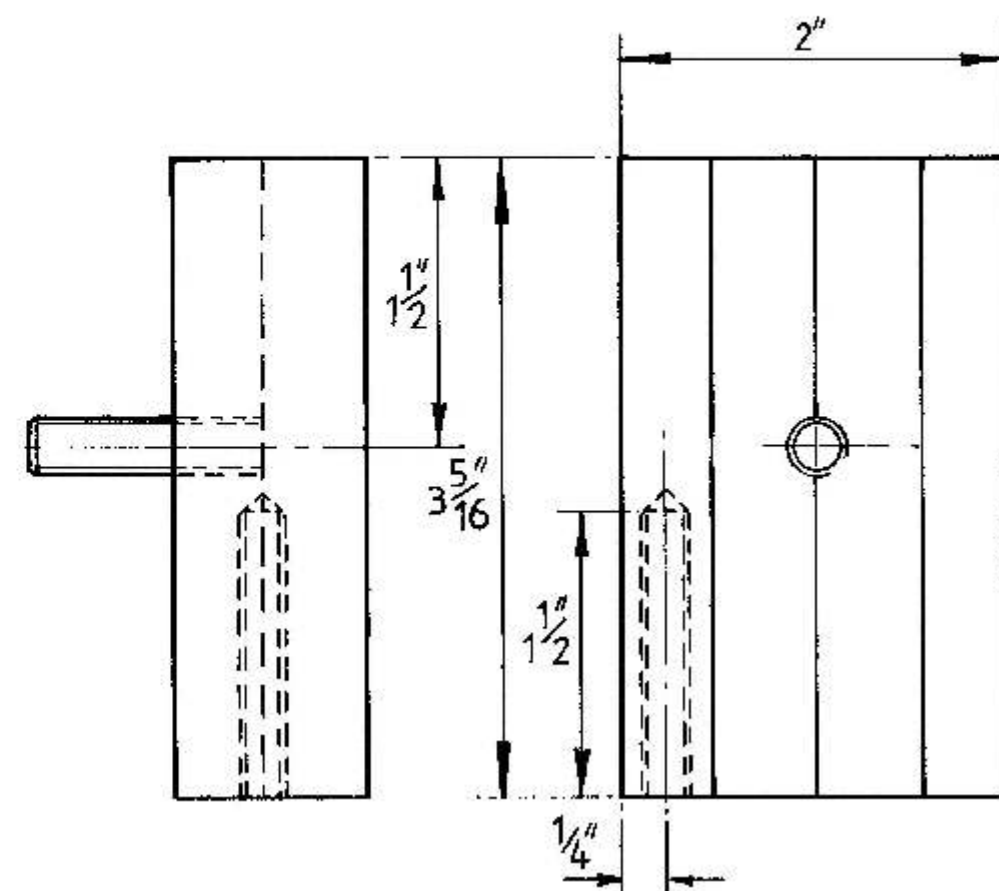
FRACTIONAL : — ALL SIZES 13/16 AND ABOVE

METRIC : — " " 21mm " "

MILLING CUTTER RE-SHARPENING JIG

By Mr. A. LONGWORTH.

© ARGUS SPECIALIST PUBLICATIONS
ARGUS HOUSE, BOUNDARY WAY,
HEMEL HEMPSTEAD HP2 7ST.



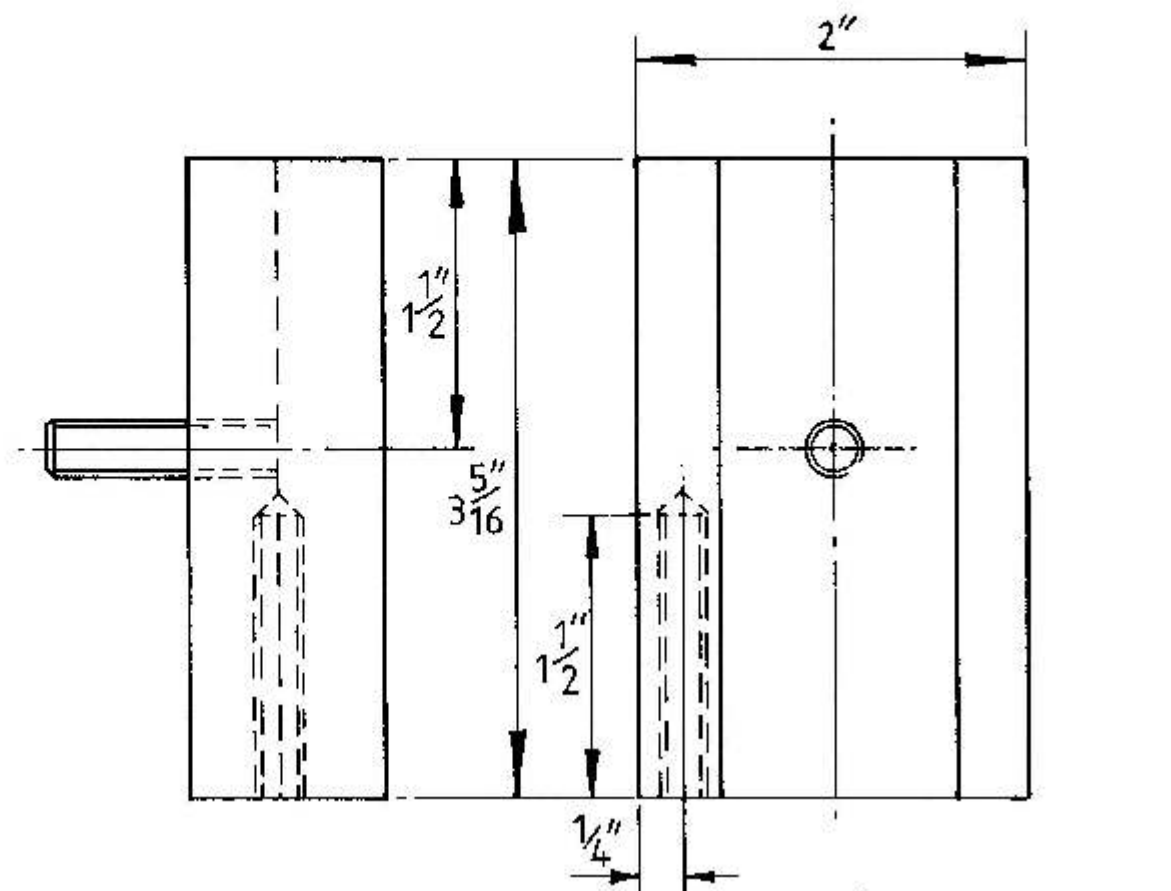
DRILL & TAP FOR
1/4" B.S.F.

90° INC.

5/16" B.S.F. STUD
RETAIN IN BLOCK
WITH 'LOCTITE'

MAT: 2"x1" B.M.S.
1 OFF
'VEE' BLOCK FOR 2 & 4 FLUTE CUTTER CHUCKS

①



DRILL & TAP FOR
1/4" B.S.F.

120° INC.

5/16" B.S.F. STUD
RETAIN IN BLOCK
WITH 'LOCTITE'

MAT: 2"x1" B.M.S.
1 OFF
'VEE' BLOCK FOR 3 & 6 FLUTE CUTTER CHUCKS

①