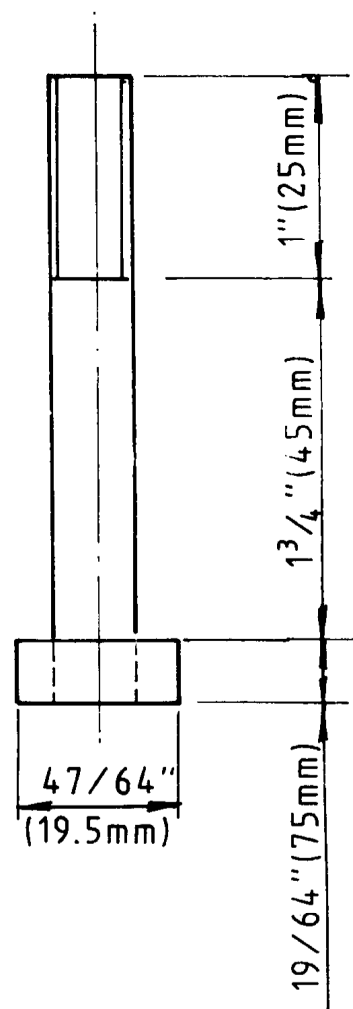
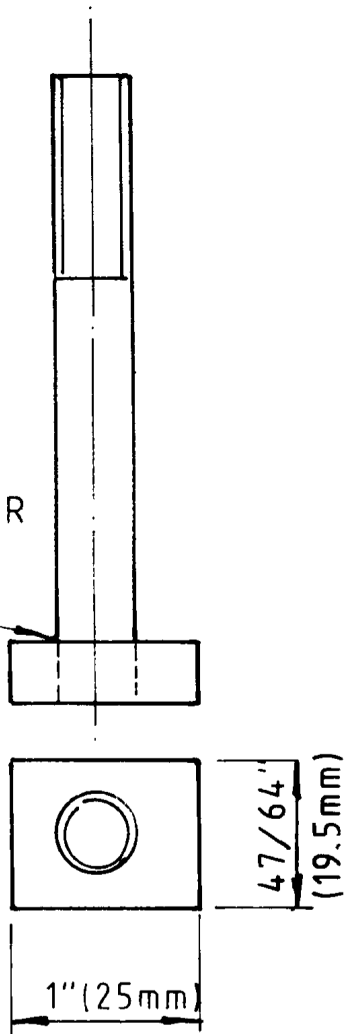
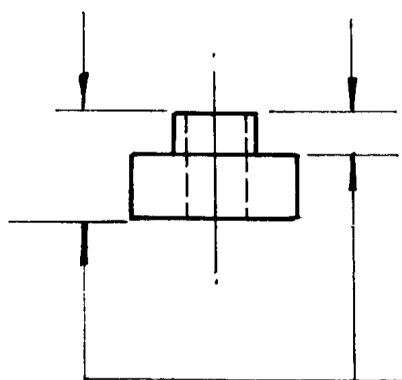
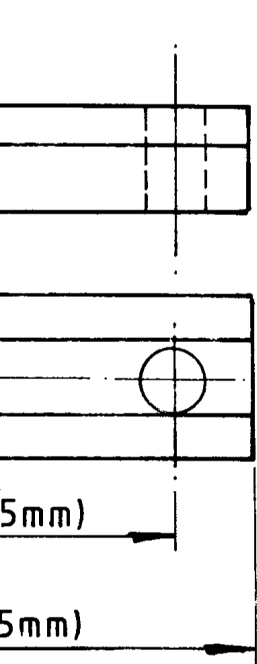


SILVER SOLDER
STUD TO TEE
PIECE.



TOOL POST STUD.

ONE OFF MILD STEEL ROD
3/8" DIA. OR 10mm DEPENDING
ON WIDTH OF TEE SLOT.



TO SUIT DIMENSIONS OF
LATHE TEE SLOT.

TEE BAR

ONE OFF MILD STEEL,
DIMENSIONS OTHER THAN THOSE INDICATED TO
SUIT LATHE HOLES TAPPED 5/16" (8mm)
ON LARGER LATHES USE LARGER THREADS.