

MODEL ENGINEERS' **WORKSHOP**

Tailstock Turret

Alex du Pre has designed this very useful accessory for lathes of 3 1/2" to 4" (and perhaps larger) lathes.

The plan was a free pullout with issue 2653, April 2017. This PDF version is available as a free download to MEW Subscribers only, and must not be duplicated or shared.

This version is copyright MyTimeMedia and the Author 1996, 2017

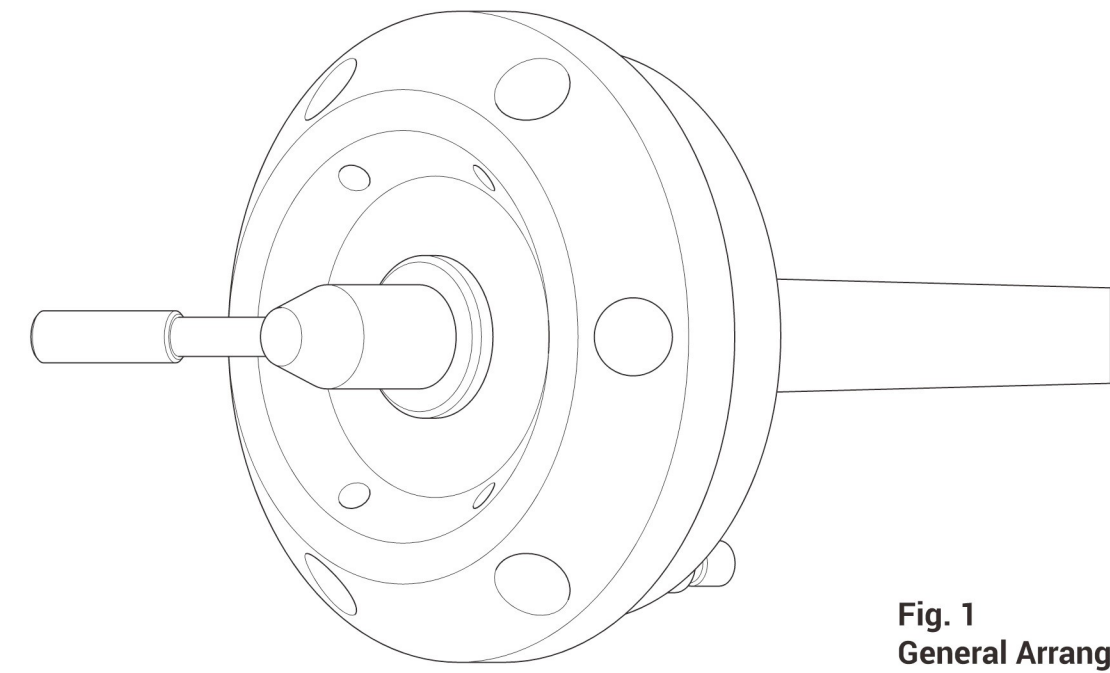


Fig. 1
General Arrangement

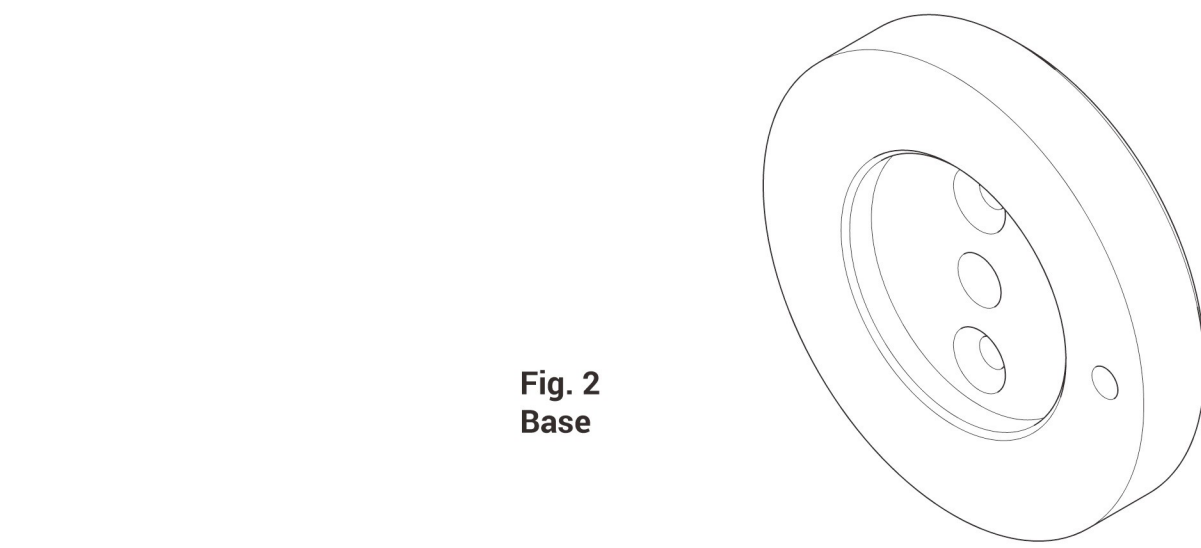
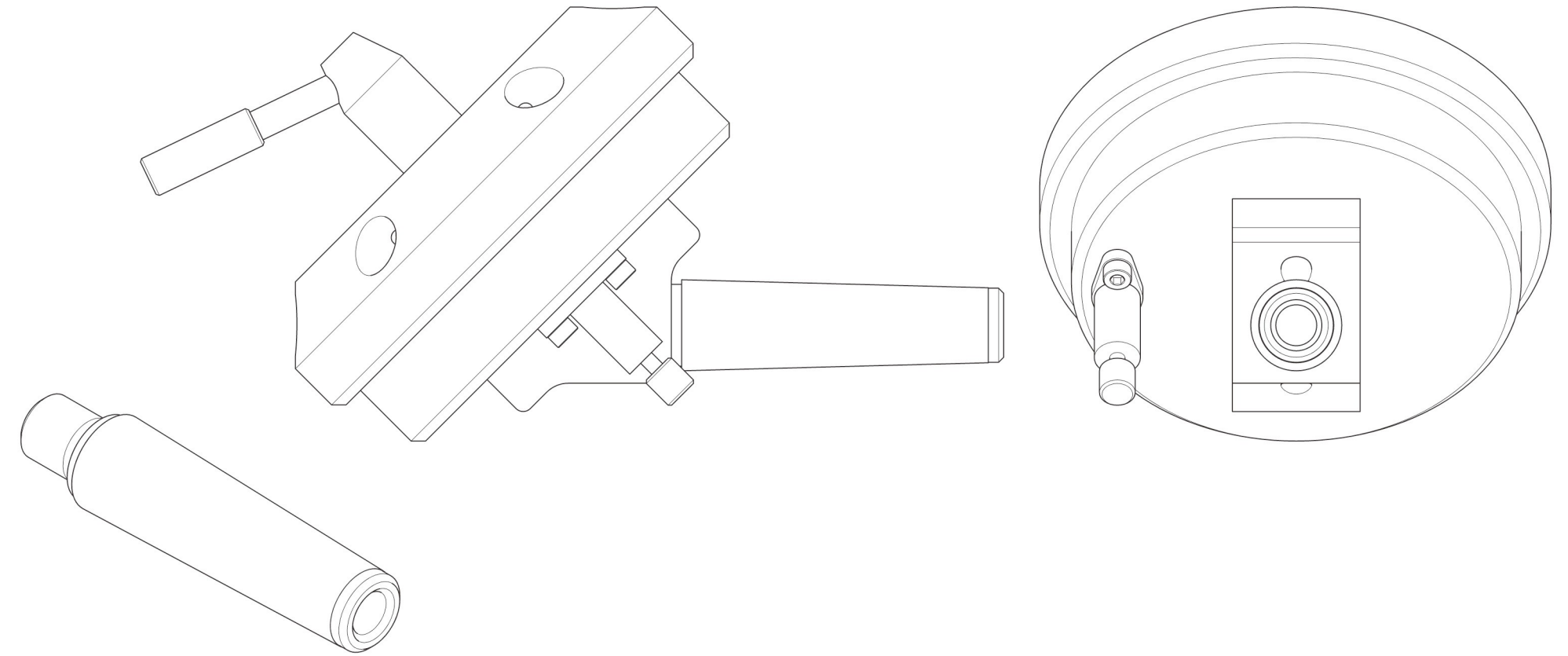


Fig. 2
Base

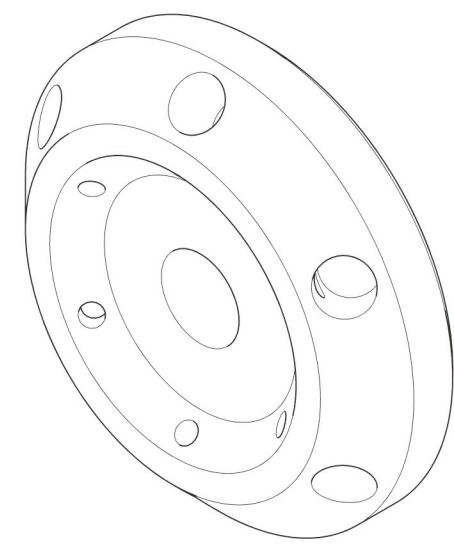
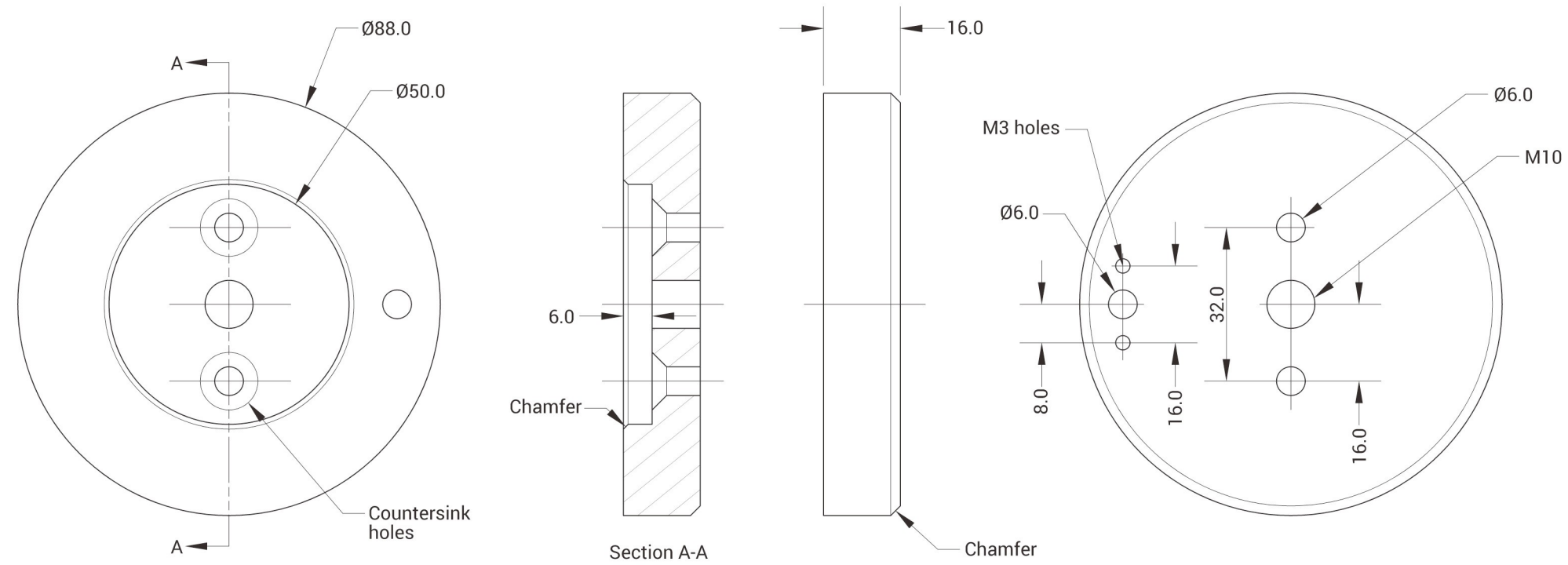


Fig. 3
Turret

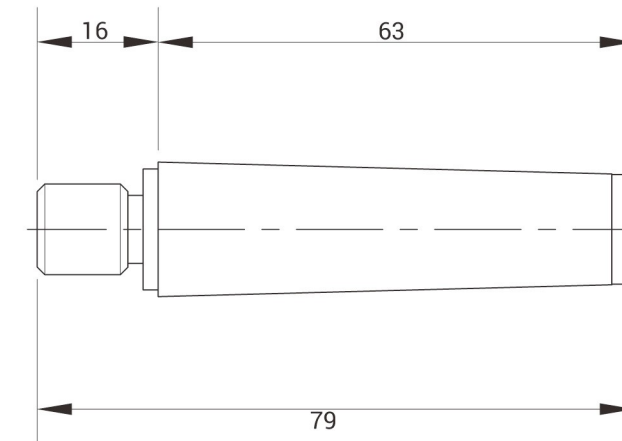
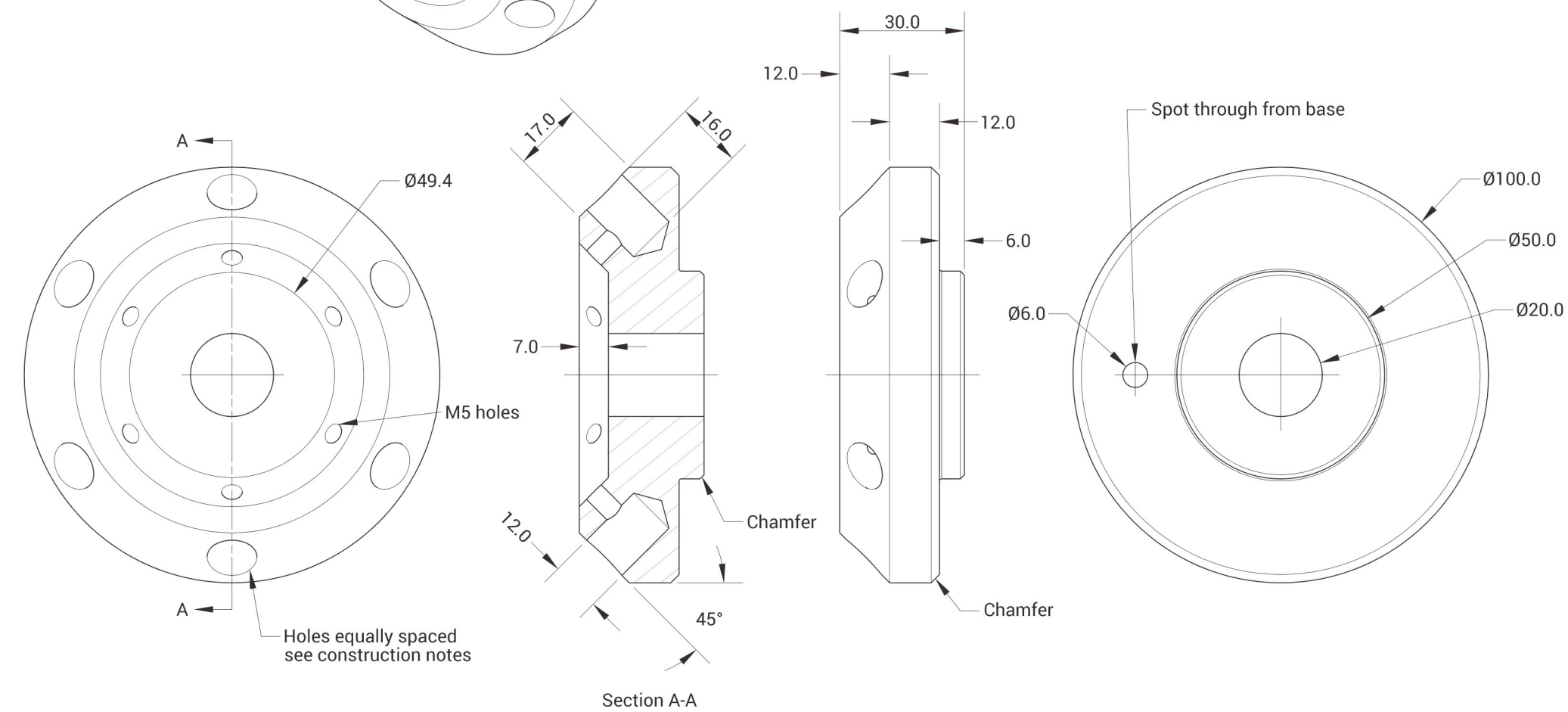


Fig. 4
Taper
Use MT2 blank end arbor threaded for drawbar L/H end male thread M12

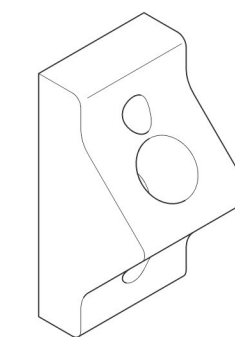


Fig. 5
Angle Piece

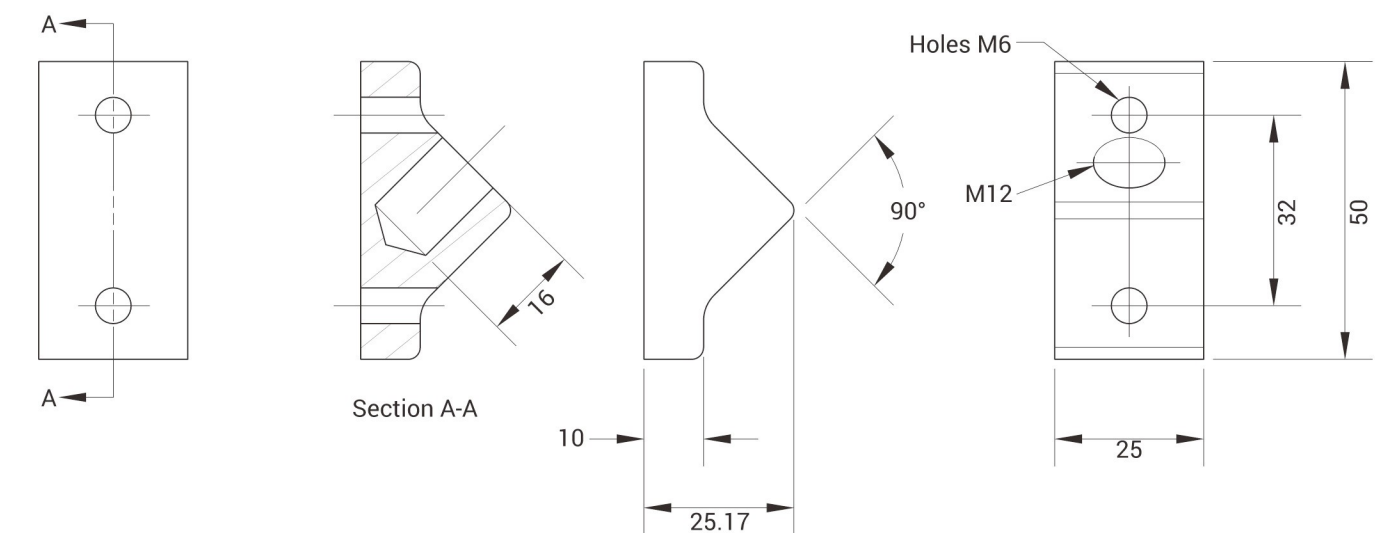
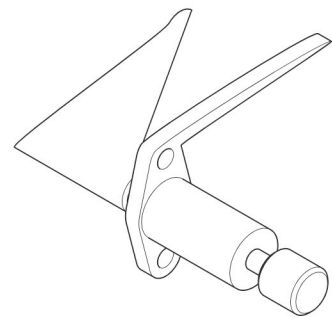
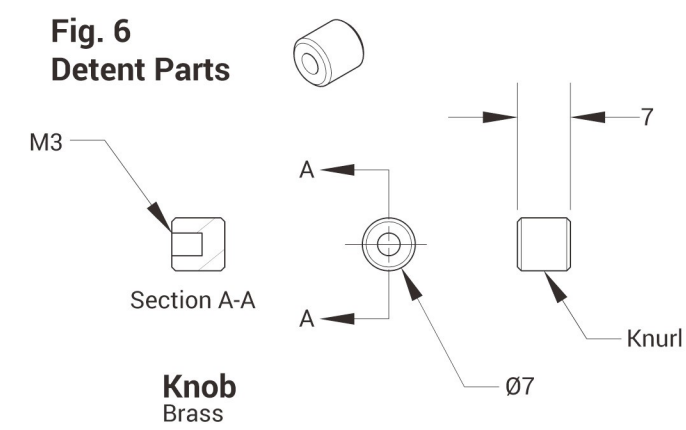


Fig. 6
Detent Parts



Detent Assembly
 Use suitable spring

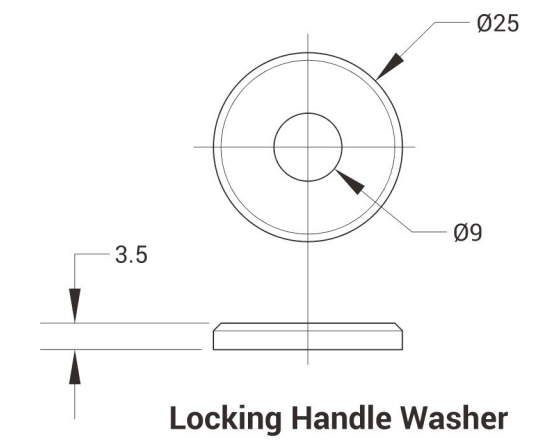
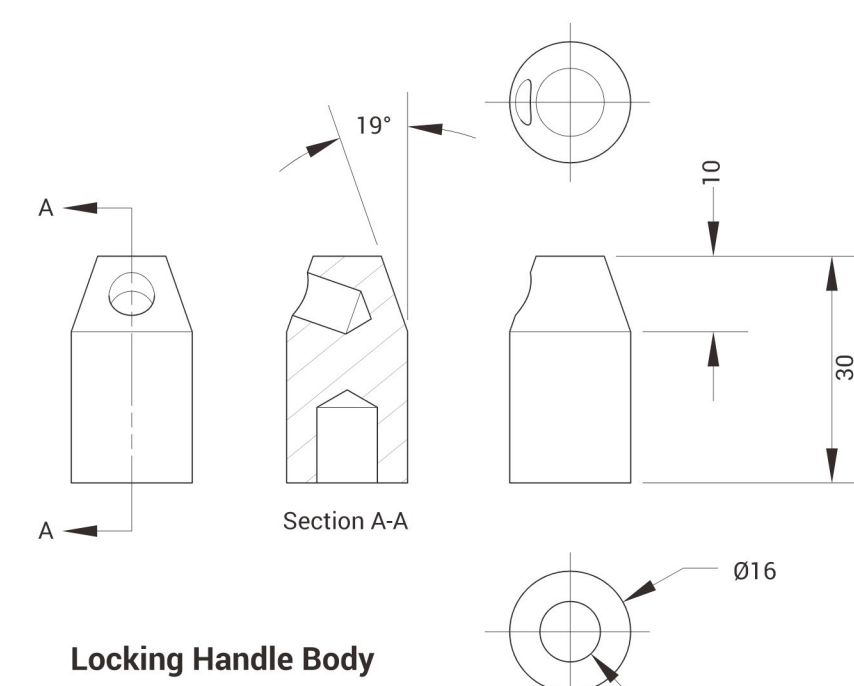
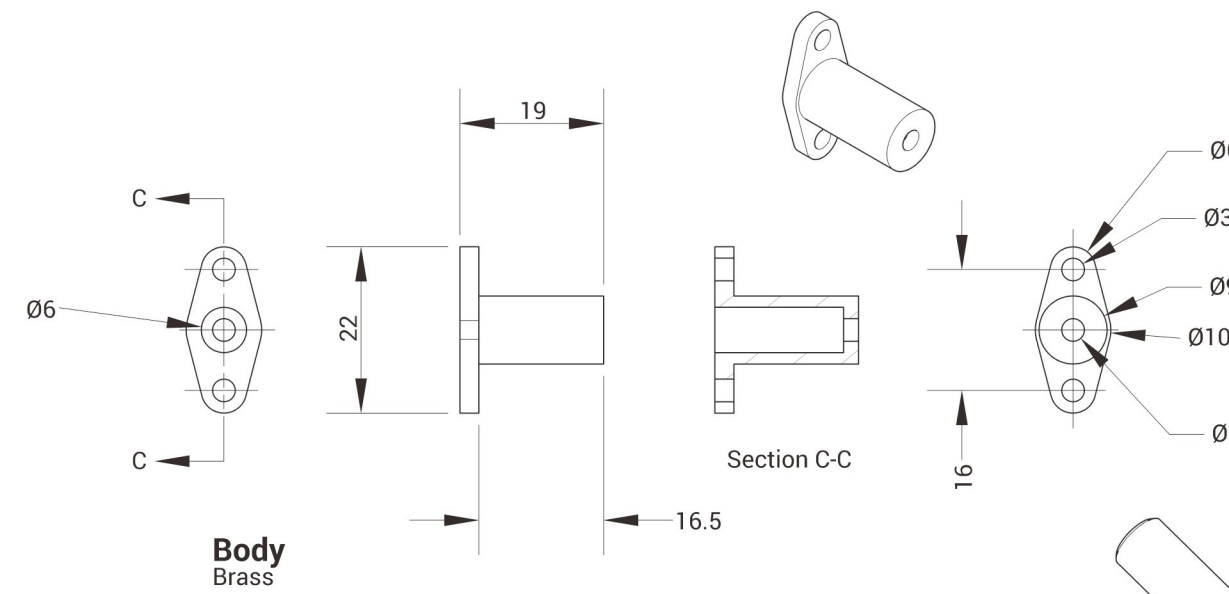
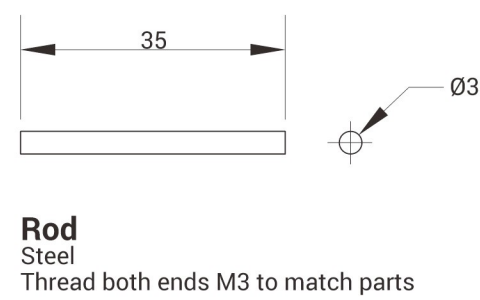
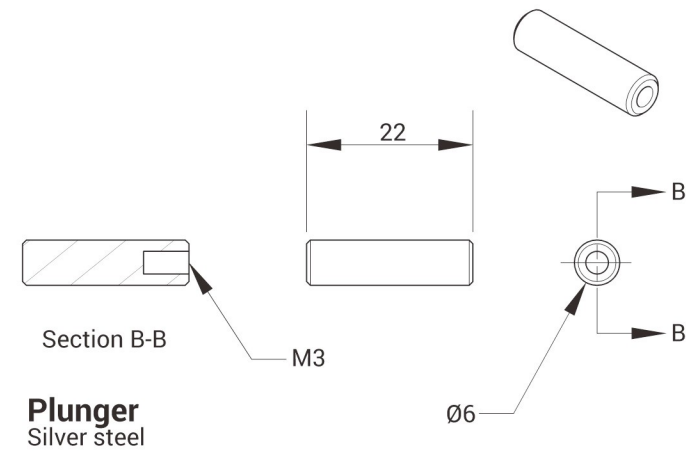


Fig. 8
Locking Handle Parts

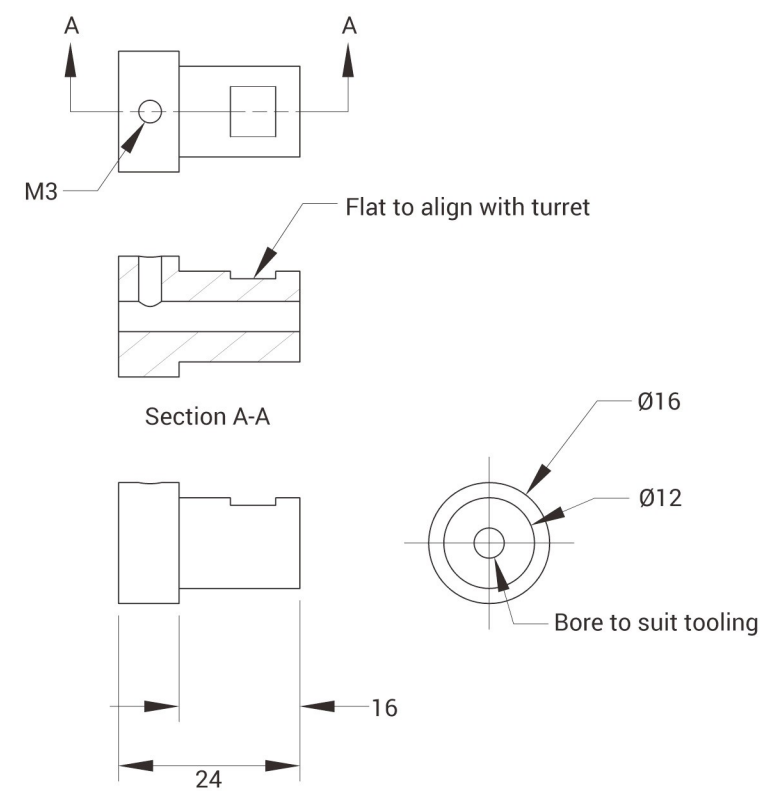
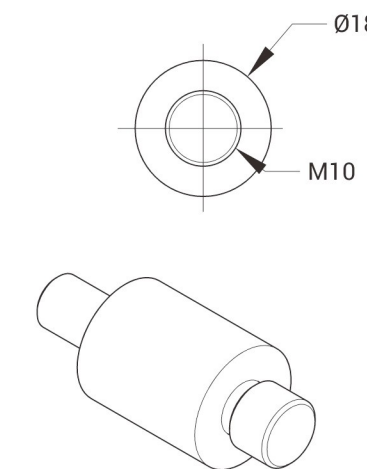
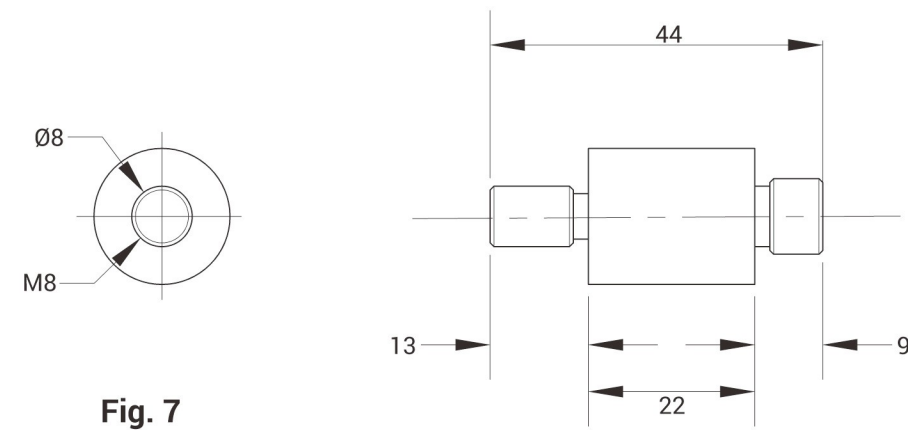


Fig. 9
Tool Holder

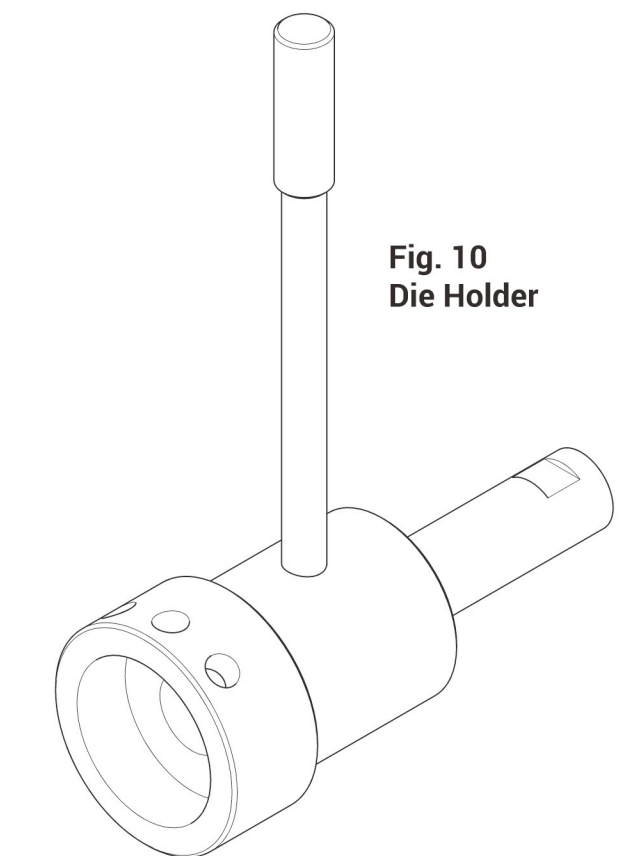
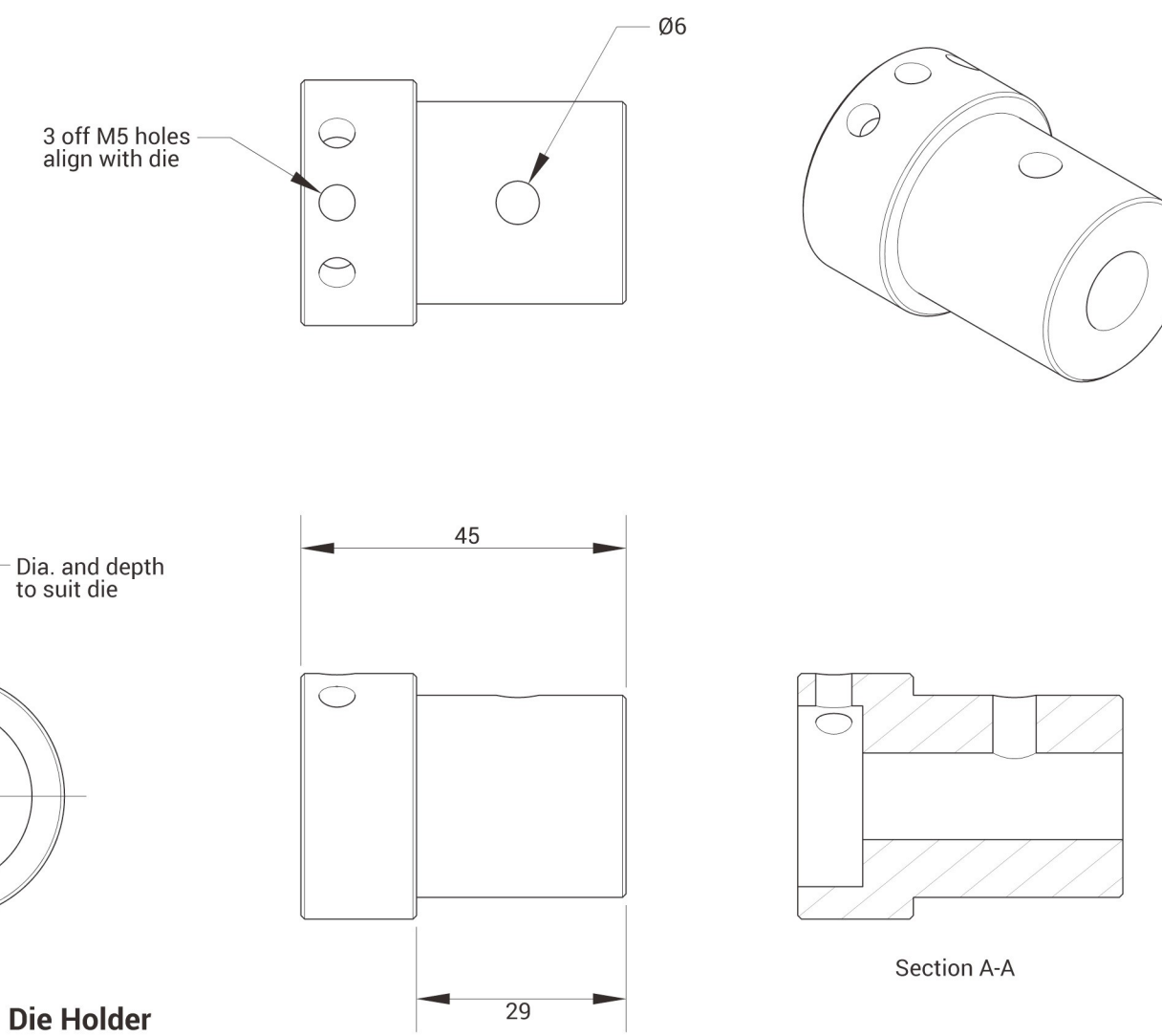
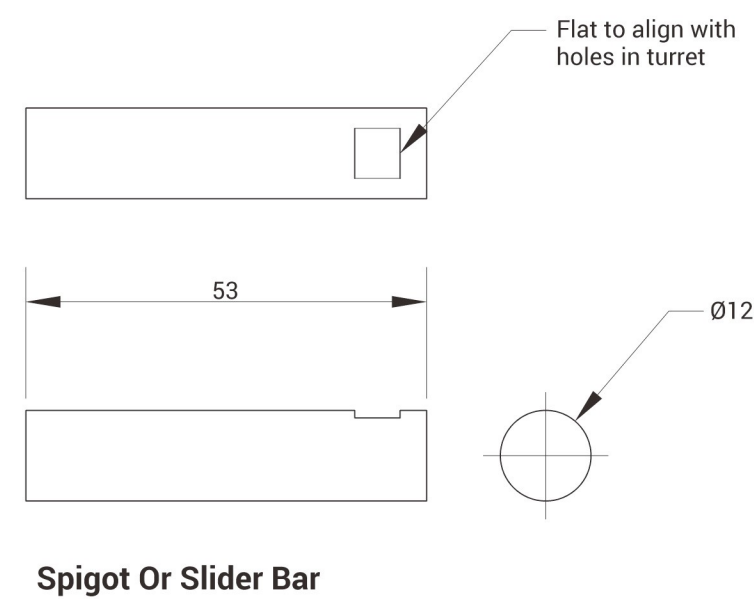


Fig. 10
Die Holder

