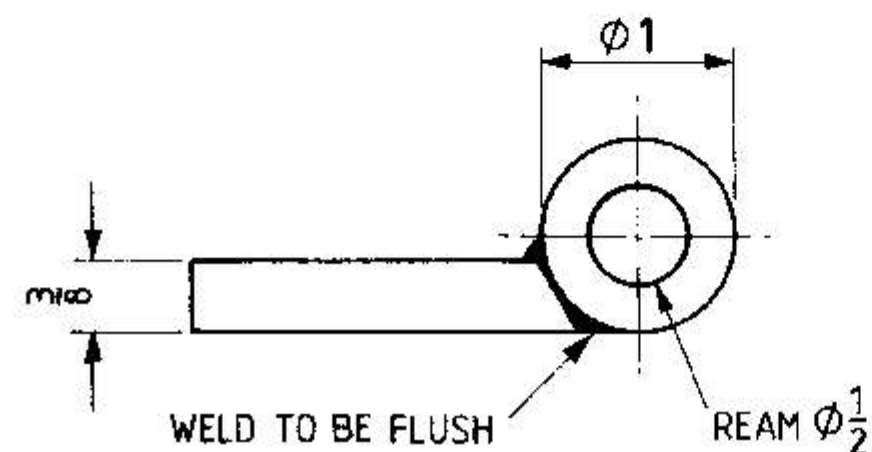
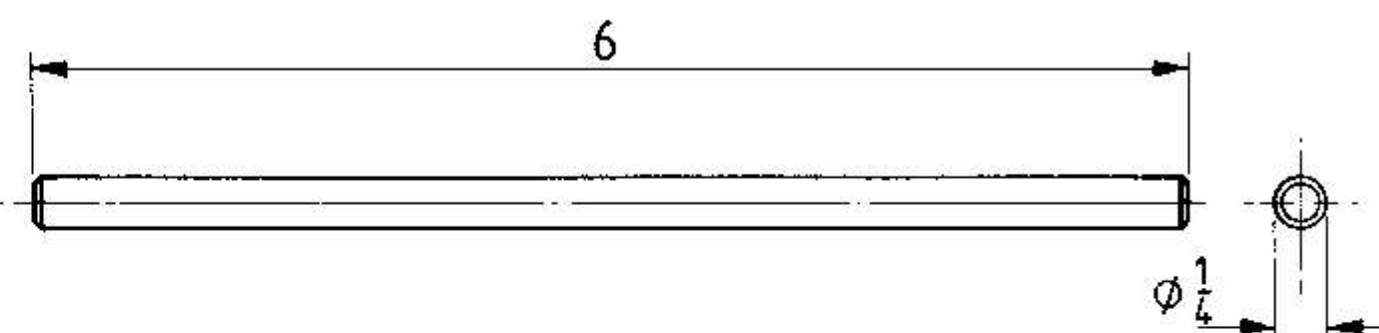


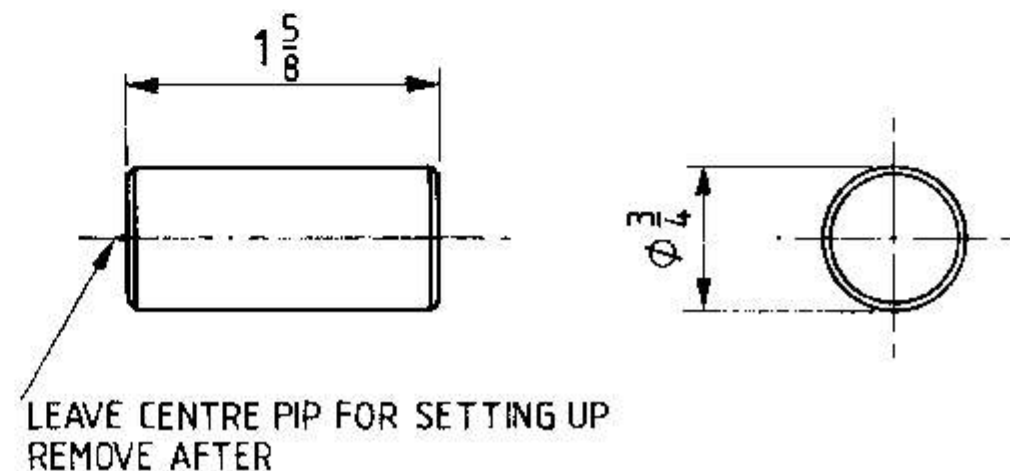
ITEM 3 PRESSURE PAD MILD STEEL QTY 1



ITEM 5 TOMMY BAR MILD STEEL QTY 1

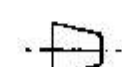


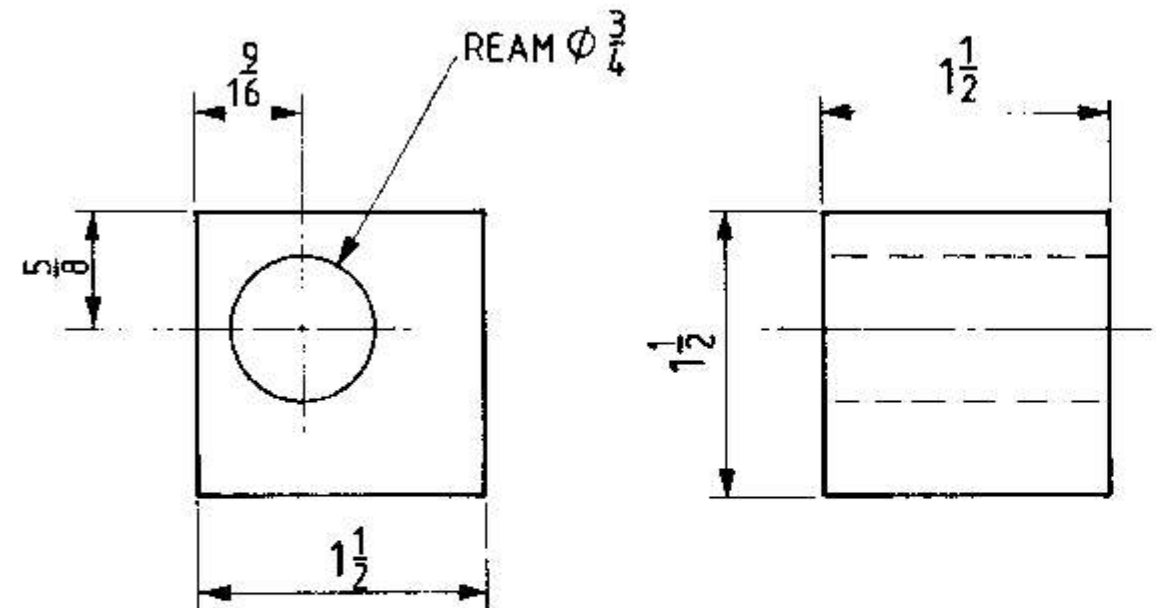
ITEM 6 HINGE PIN MILD STEEL QTY 1



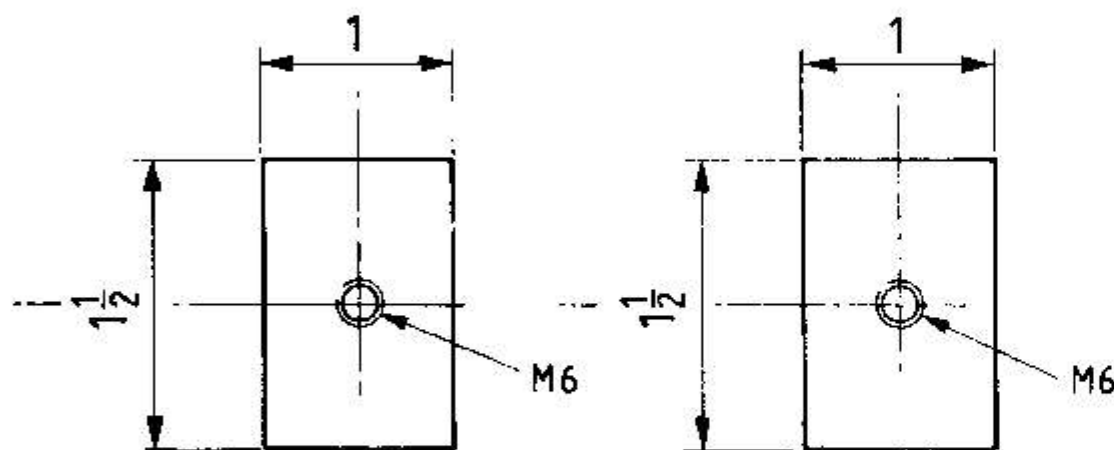
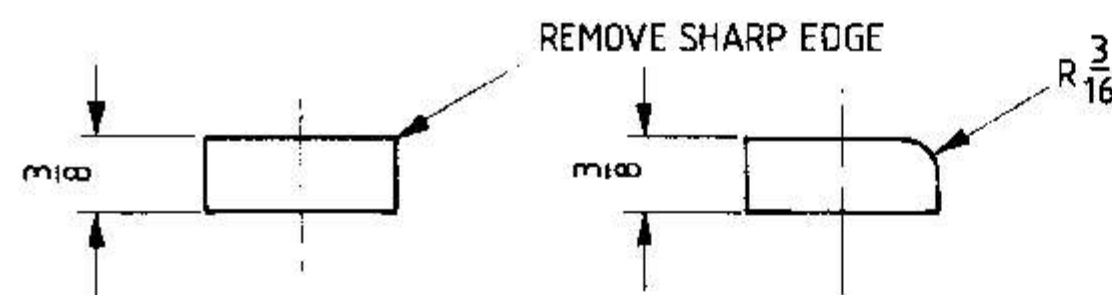
A METAL BENDER

BY TERRY GOULD

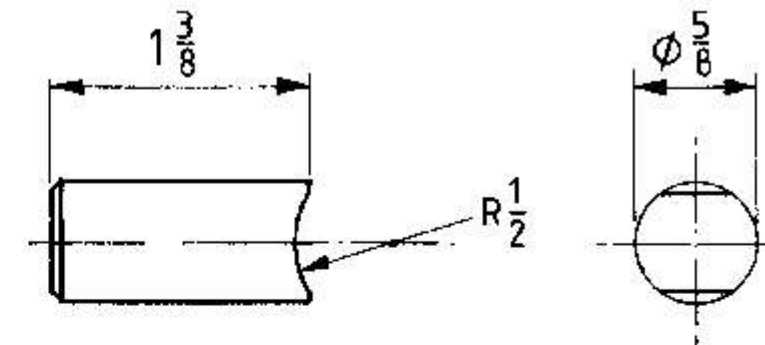
 THIRD ANGLE PROJECTION DIMENSIONS IN INCHES
 PRESENTED IN ISSUE 10 OF MODEL ENGINEERS WORKSHOP
 COPYRIGHT ARGUS SPECIALIST PUBLICATIONS, ARGUS HOUSE,
 BOUNDARY WAY, HEMEL HEMPSTEAD, HERTS. HP2 7ST



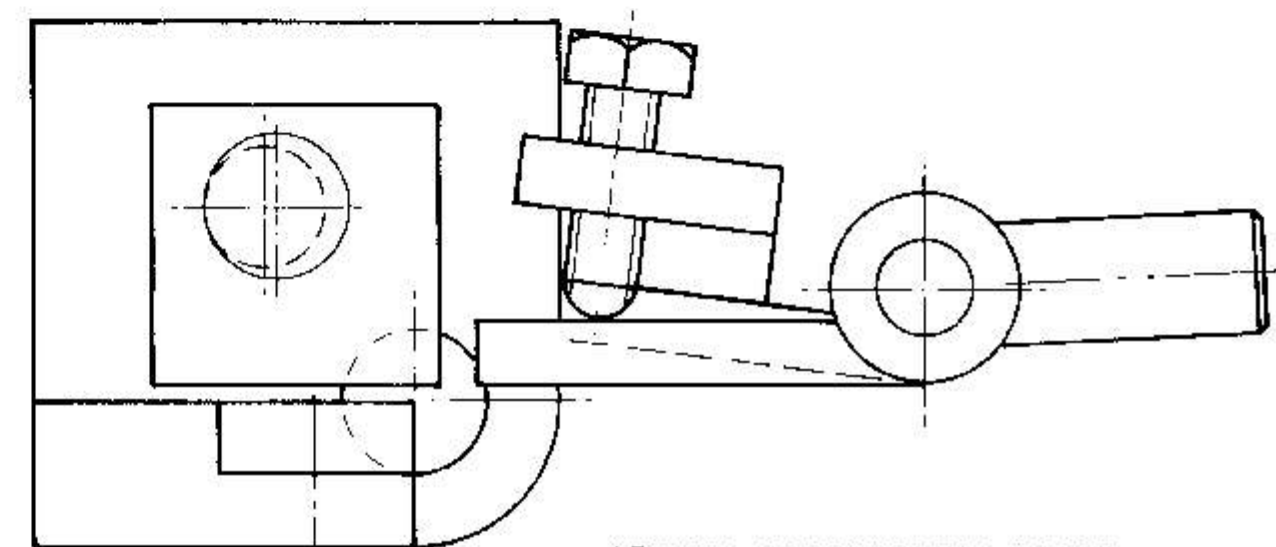
ITEM 7 CLAMPING BLOCK MILD STEEL QTY 1



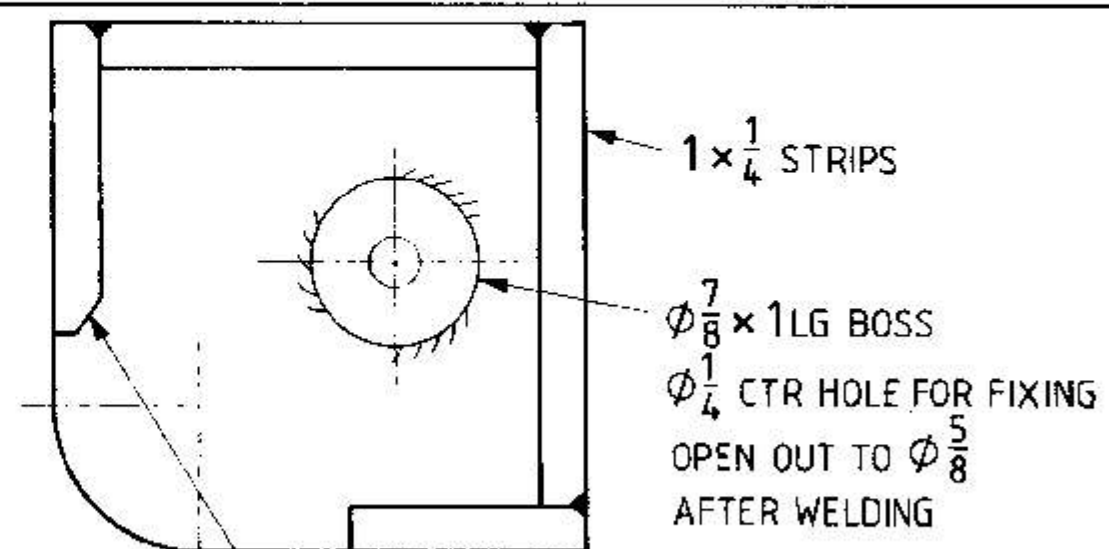
ITEMS 8A & 8B PLATES MILD STEEL QTY 1 EACH (SEE TEXT)



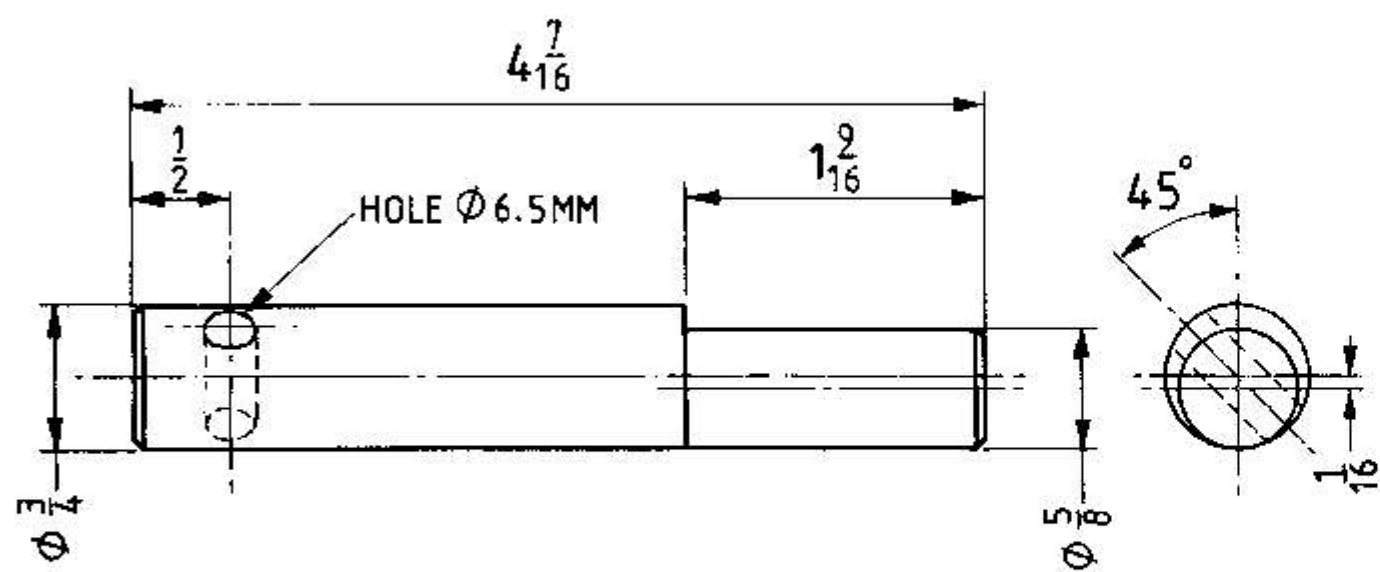
ITEM 9 PEG MILD STEEL QTY 1 (SEE TEXT RE HANDLE)



ADJUST PRESSURE PAD ITEM 3
 WITH M10 SCREW (RADIUS END)
 UNTIL FACE OF PAD IS PARALLEL
 TO MATERIAL TO BE BENT, ROTATE
 CLOCKWISE CLAMP BAR TO LOCK MATL



CHAMFER TO CLEAR HINGE ITEM 2
 ALTERNATIVE FOR CENTRE SECTION OF BASE



ITEM 4 CLAMPING BAR MILD STEEL QTY 1

1 x 1/4 STRIPS

7/8 x 1 LG BOSS
 1/4 CTR HOLE FOR FIXING
 OPEN OUT TO 5/8
 AFTER WELDING