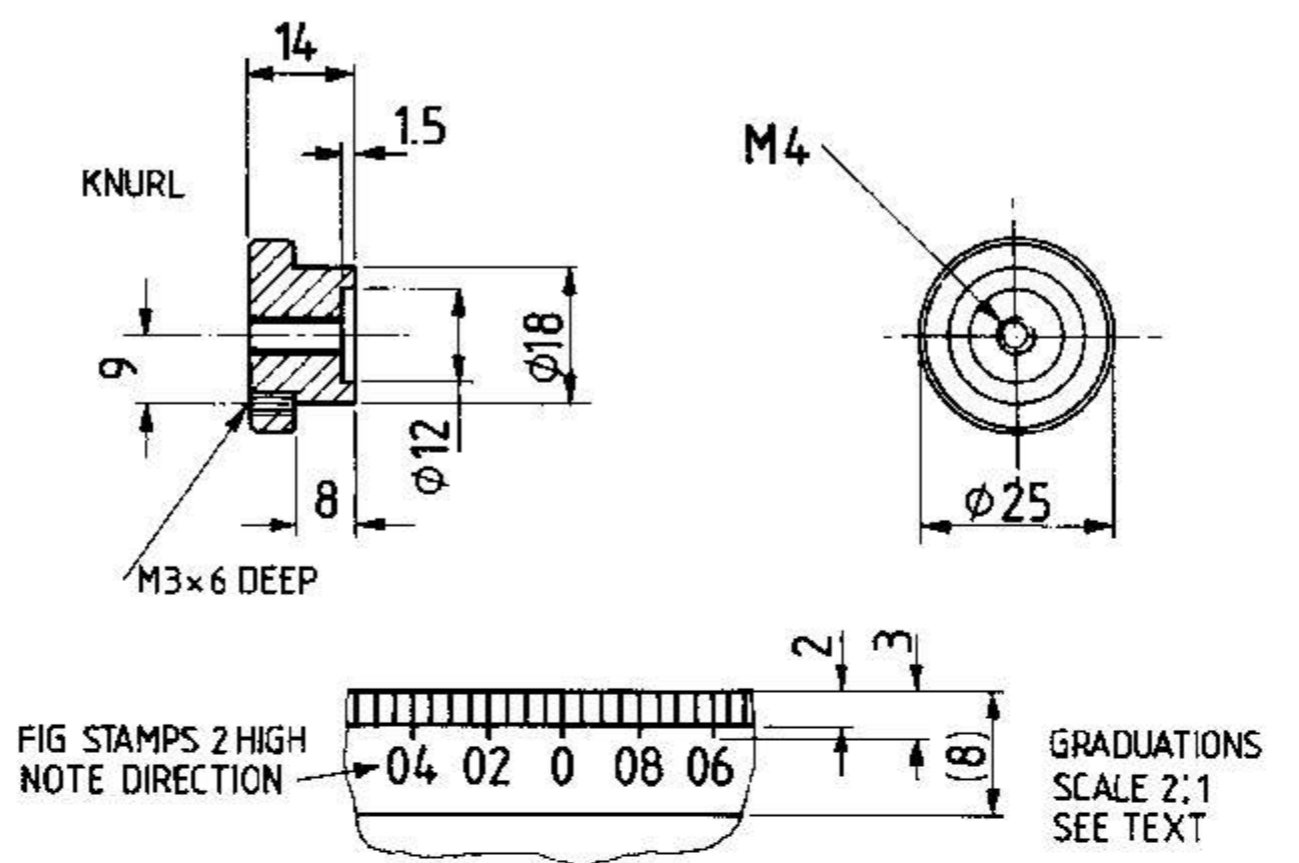


ITEM 7 TOOLHOLDER MILD STEEL QTY 1 (BMS 40x25x25)



ITEM 10 HANDWHEEL MILD STEEL QTY 1 (BMS $\phi 25 \times 14$)

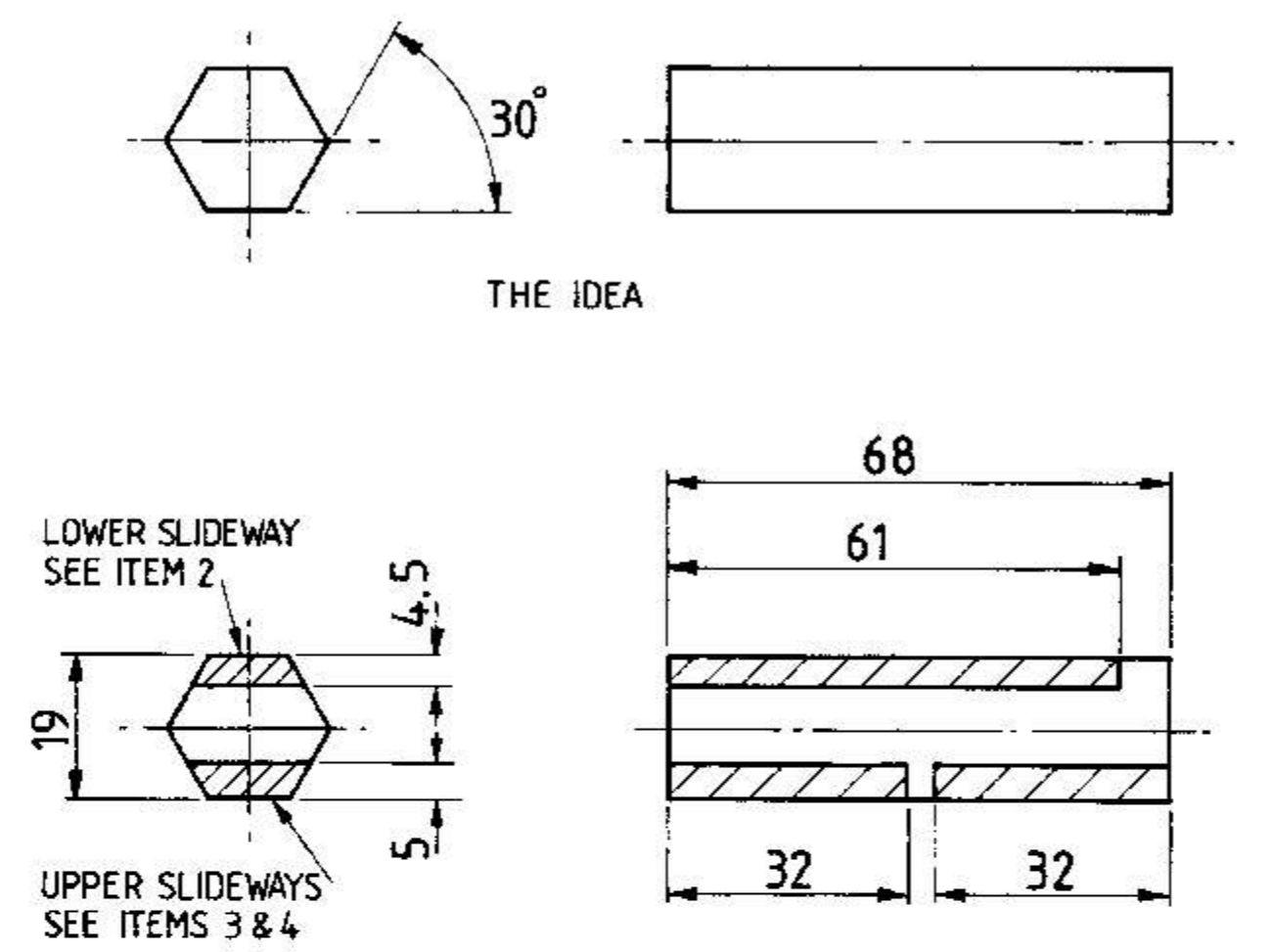
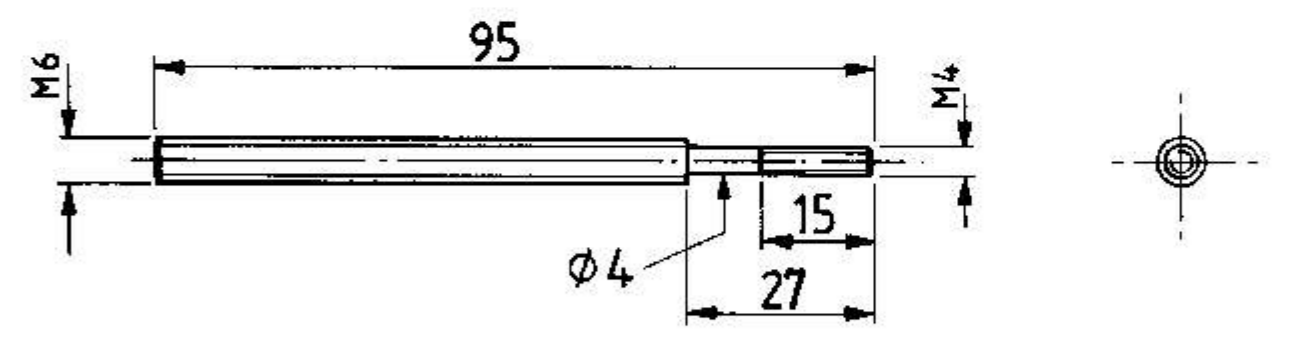
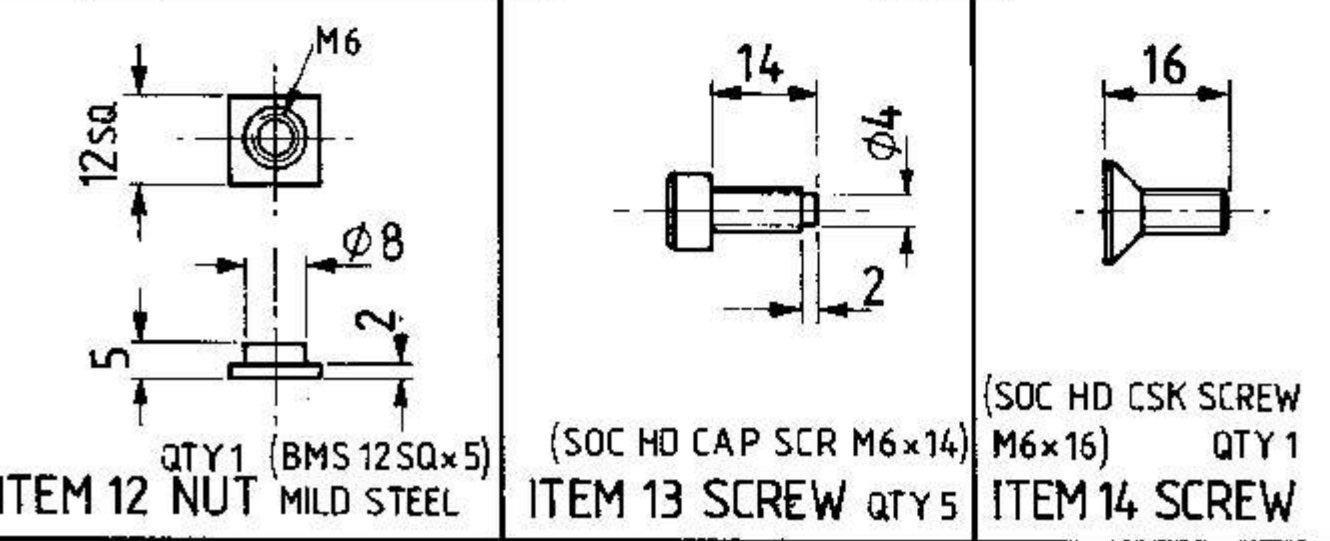
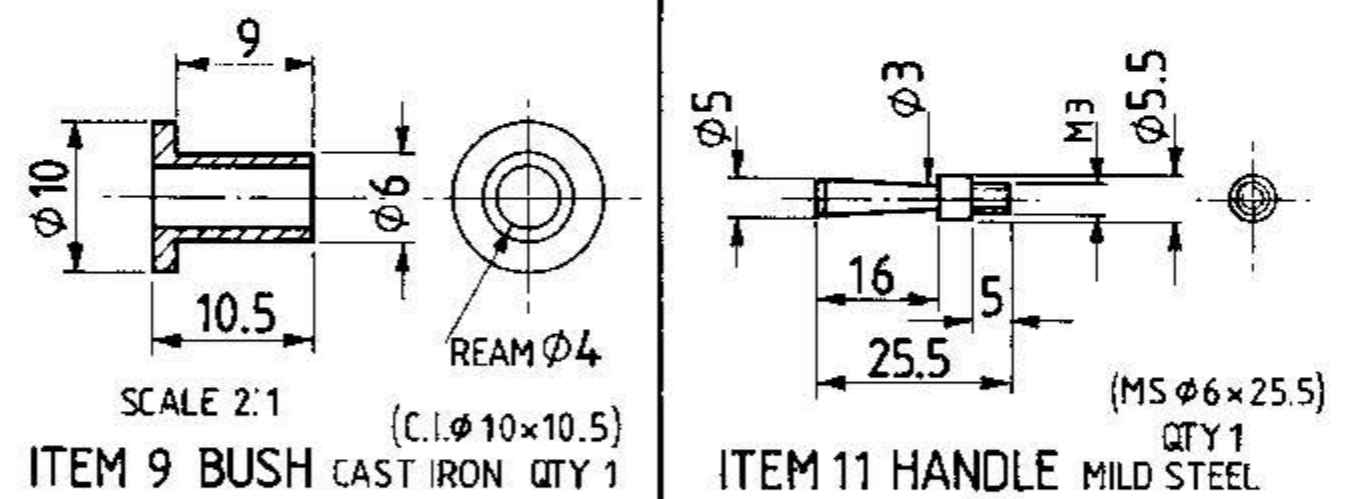


FIG 1 HOW THE SLIDEWAYS ARE CUT FROM 19 A/F HEXAGON BMS BAR



ITEM 8 LEADSCREW MILD STEEL STUDDING QTY 1



A TOP SLIDE FOR THE UNIMAT 3 LATHE

BY Mr. D. SCROGGINS.

PRESENTED WITH MODEL ENGINEERS' WORKSHOP
COPYRIGHT ARGUS SPECIALIST PUBLICATIONS
ARGUS HOUSE, BOUNDARY WAY, HEMEL HEMPSTEAD, HERTS. HP2 7ST
DIMENSIONS IN MM THIRD ANGLE PROJECTION

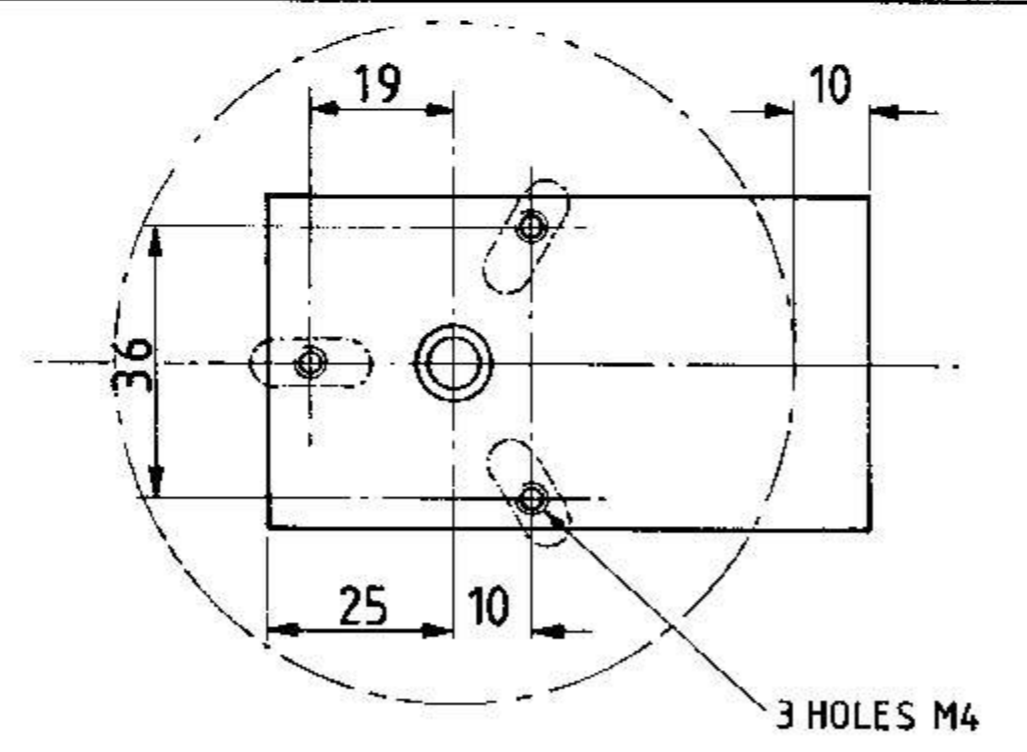


FIG 2 THE SET-UP OF THE BASEPLATE ON THE FACEPLATE

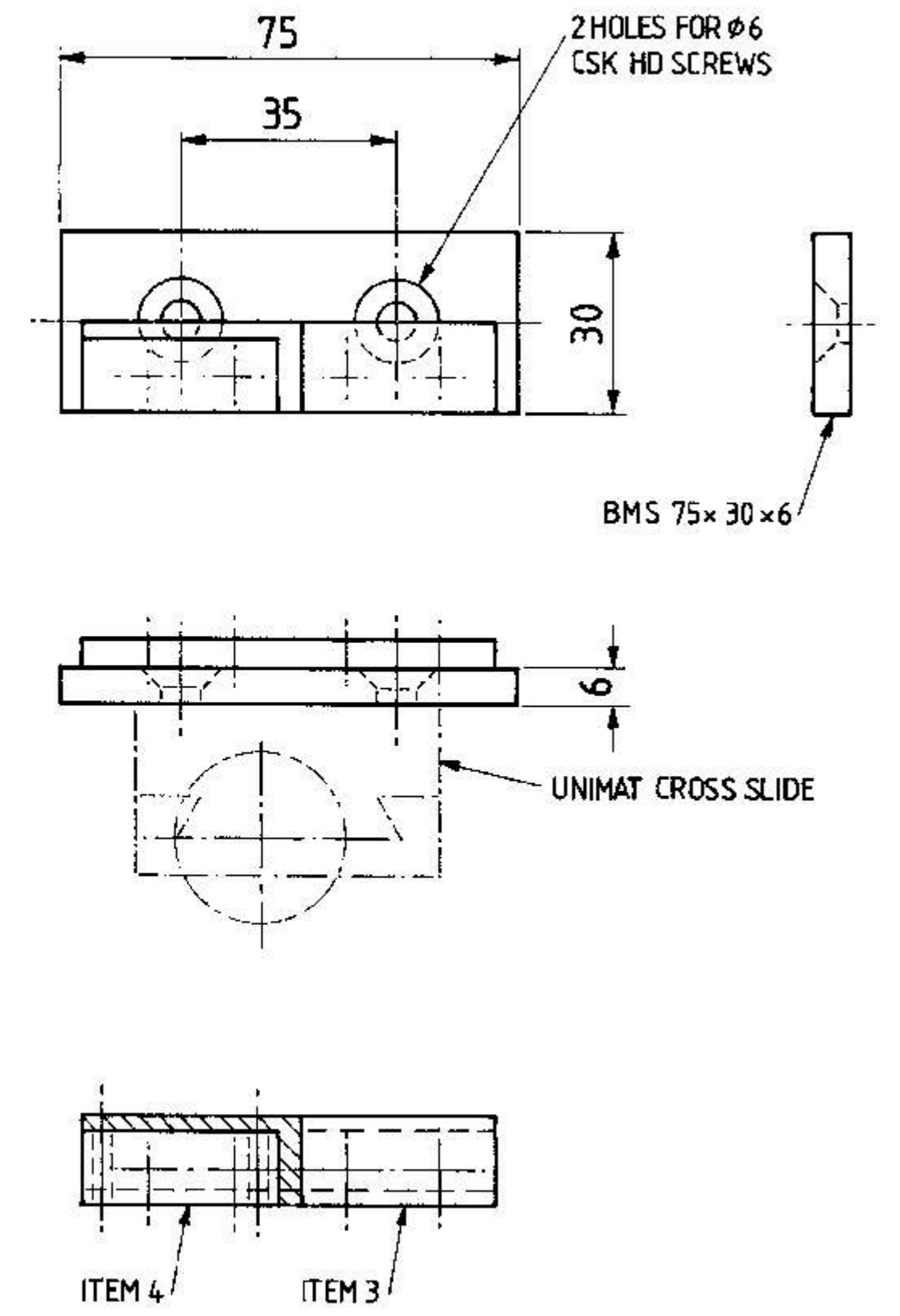


FIG 3 SUGGESTED LAYOUT OF UPPER SLIDEWAYS FOR MACHINING THICKNESS ON THE UNIMAT